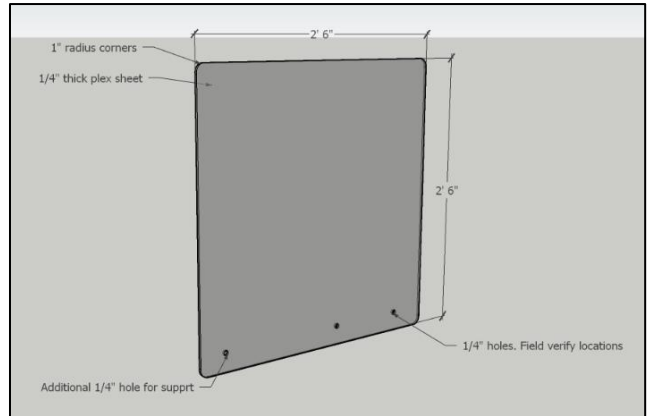


# Checkstand Sneeze Guard Install Guide

This document provides recommended solution and installation of a Sneeze Guard for Store Checkstands.

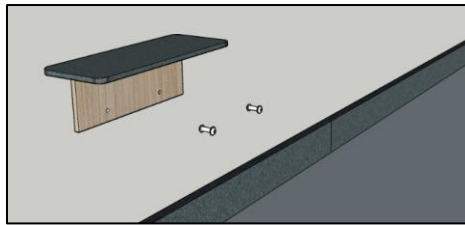
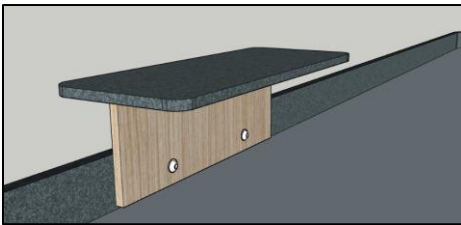
## 1.1 Materials for Checkstands

- A. Guard Panel:
  1. Material: 1/4 inch Plexiglass
  2. Size: 30 inch by 30 inch, 1 inch radius corners and 1/4 routed edges
  3. Holes Needed: (3) at 1/4 inch
- B. Fasteners (Per Panel):
  1. (3) Pan Head Screws: (3) 1/4 inch by 1-1/2 inch long
  2. (6) Fender Washers: 1/4 inch ID, 1 inch OD
  3. (3) Split Lock Washers: 1/4 inch ID
  4. (3) Lock Nuts: 1/4 inch ID

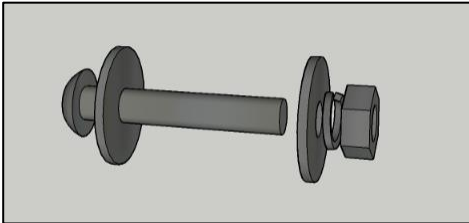


## 1.2 Installation (Photos of Field Install on Page 2):

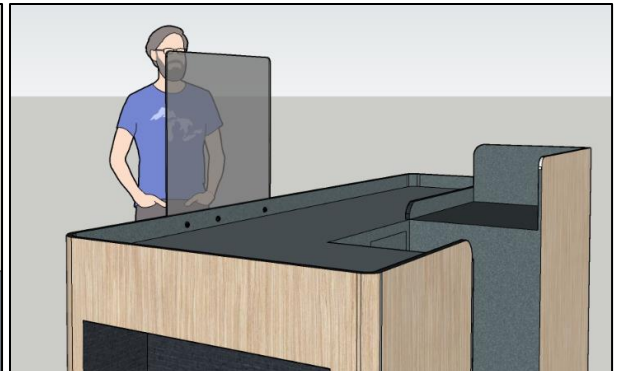
- A. Remove Existing Check Writing Stand. **RE: Photo 1, Page 2**
  1. Note: Existing through bolts typically have an Allen Head.



- B. Measure location of both EXISTING Check Writing Stand holes (can vary by Model). **RE: Photo 2, Page 2**
  1. Keep holes a minimum of 1-1/2 inch from all edges of Plexiglass
- C. Hold Panel to Checkstand, install first (2) Screws and related Fasteners
  1. Drill Checkstand and Panel for 3rd Screw. **RE: Photo 3, Page 2**



- D. Install 3rd Screw and related Fasteners. Install complete. **RE: Photos 4 & 5, Page 2**
  1. NOTE: Retain Check Writing Stands for Re-Installation.



## 1.3 Supplemental Info: Full Size copies of Renderings & Field Install Photos for your Reference.

Photo 1



Photo 2



Photo 3



Photo 4

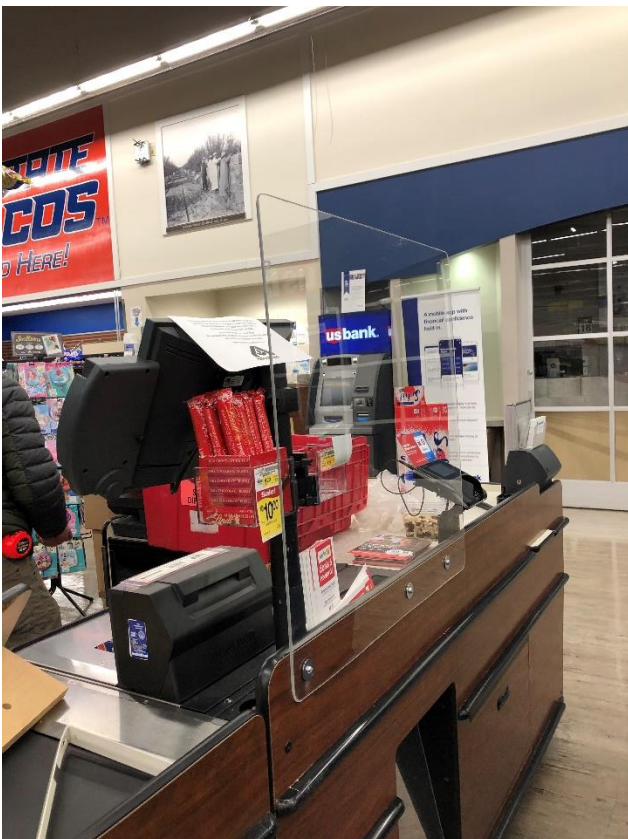
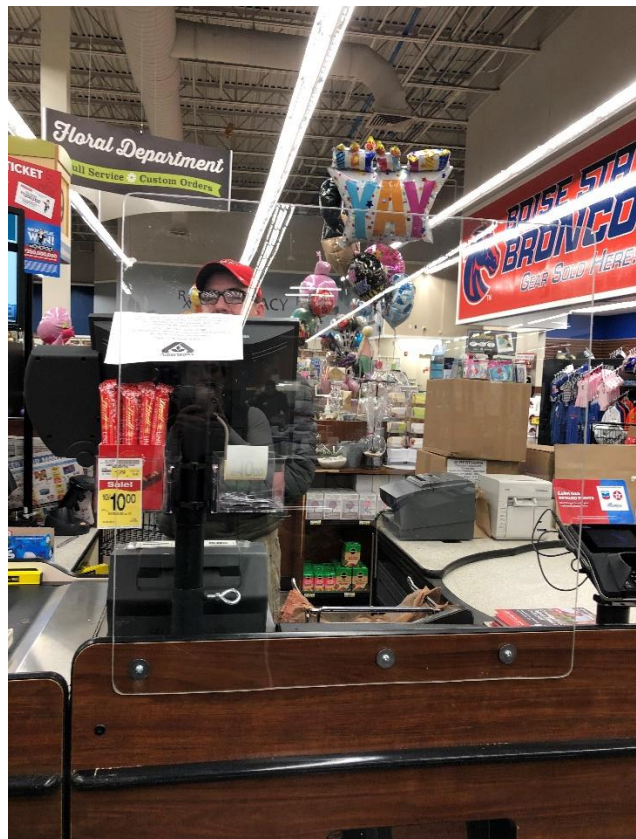


Photo 5



END OF DOCUMENT