

# **PROFESSIONAL PLASTICS, INC.**

*The Nation's Largest Supplier of High-Performance Engineering Materials*

## **Signage, Graphics & Display Materials Guide**



Sheffield Plastics Inc.  
A Bayer MaterialScience Company



Since our establishment in 1984, Professional Plastics has been a family owned and operated company focused on providing our customers the best selection, prices and service in North America.

While we've grown our operation to more than a dozen full-scale stocking locations throughout the US, our commitment hasn't changed. Today, Professional Plastics supplies the widest range of semi-finished plastics materials in the industry.

Our expansive inventory, competitive prices and exceptional customer service has helped us become the largest supplier of high-performance plastic shapes in North America.

## Graphic Films from Professional Plastics



### **Makrofol® polycarbonate film**

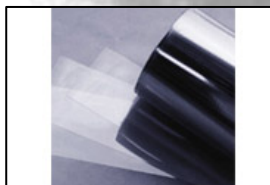
Makrofol® polycarbonate film is offered in transparent, translucent, opaque, and metallic surface textures, custom colors, and mar-resistant grades, as well as grades for laser printing. Makrofol enables film insert molding with excellent light-diffusing characteristics, improved UV protection, superior chemical resistance, and flame retardant properties.



### **Bayfol® Polycarbonate Blend Film**

Bayfol® Polycarbonate Blend Film offers improved chemical resistance and increased formability. Bayfol® CR films are noted for their superior chemical resistance and enhanced flexibility when compared to pure PC film. Bayfol® AS-A is our anti-static film grade – exceptionally suitable for packaging of electronic components.

**For more detailed information on our full-line of Makrofol® & Bayfol® Polycarbonate films, please see the Data Sheets & comparative product overview pages (pages 6-7).**



### **Mylar® Polyester Film**

Mylar® polyester film exhibits superior strength, heat resistance, and excellent insulating properties. The unique qualities of Mylar® created new consumer markets in magnetic audio and video tape, capacitor dielectrics, packaging, and batteries. Mylar® Film is available in Two Standard Types:

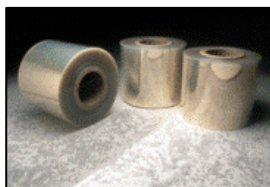
**Mylar® D (Clear)** is a clear, brilliant film which is surface treated on both sides to give superior slip characteristics and excellent handling properties

**Mylar® A (milky white translucent) (electrical grade)** polyester film is a flexible strong and durable film with an unusual balance of properties. It is a translucent film. Because it contains no plasticisers it does not become brittle with age under normal conditions



### **Melinex® polyester film**

Melinex® polyester films are known around the world and used in hundreds of industrial, packaging, imaging, printing, technical and consumer products. With more than 930 basic grade types covering 90+ market segments and 140+ specific end uses, we produce the world's broadest range of high-quality polyester film. Melinex® is a biaxially oriented polyester film from the DuPont Teijin Films family of films.



### **Teonex® PEN Film**

Teonex® PEN films bridge the gap between the price and performance of polyester and polyimide films. The novel and innovative grades are perfect for high-value-added applications in labels, laminates, circuitry and release. Bring us your process or product challenge. For improved dimensional stability, inherent UV or rigorous processing, Teonex® PEN films are the answer.



### **Rigid Vinyl**

Rigid vinyl is a great plastic film for point-of-purchase signage, shelf danglers and many other applications. Professional Plastics offers a full-range range of rigid vinyl, including special colors.

Matte/Matte texture - White opaque in 0.010" - 0.020" gauges.

Gloss/Gloss texture - Clear in 0.0075" - 0.020" gauges; white opaque in 0.010" - 0.020" gauges

Velvet/Matte texture - Clear (scuff resistant) in 0.010" - .020" gauges

Press Polished Two Sides - White opaque in 0.025 gauge; clear in 0.030" gauge





### Polystyrene (HIPS) – High Impact Polystyrene

Polystyrene (HIPS) is used for point-of-purchase signage and many other applications. Tekra has both a stocking program for immediate shipment and also can obtain custom orders for customers from the mill (for example, corona treatment or UV inhibitors). **White Translucent Styrene** - 0.010" - 0.020" gauges; litho grade, press-ready sheets; matte/matte texture. **Double White Opaque Styrene** - 0.010" - 0.030" gauges; litho grade, press-ready sheets; matte/matte texture. **White Opaque** - 0.040 - 0.060" gauges; screen grade, untrimmed sheets; matte/matte texture

### High Density Polyethylene

High Density Polyethylene is an extruded polyolefin available in natural, white, and colors in gauges from .010 to .075. Works well for outdoor applications even when exposed to a wide range of temperatures.



### Tyvek®

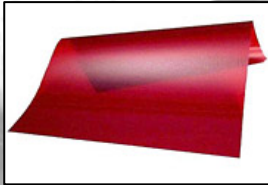
Tyvek is a spun-bonded olefin with inherent strength and durability. Offering superior strength to paper and greater versatility than fabrics, Tyvek is lightweight, flexible, smooth, low-linting, opaque and resistant to water, chemicals, abrasion and aging, while at the same time easily printable. This unique combination of properties makes Tyvek ideal for banner stock.



### Sign Tape - Hi Tack

Sign Tape - Hi Tack

Graphic designers spend countless hours working to achieve just the right look for their clients. So when they've created special lettering, a high-impact logo or other graphics, nothing should get in the way of an ideal end result. That's why Main Tape has created a full line of products especially for positioning and protecting graphics.

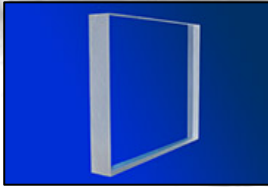


### Rubylith® Masking Film

Rubylith is used in every segment of the graphic arts and has gained such prominence that the Rubylith brand has become synonymous with masking film.

- Standard Rubylith Film rolls are 48" wide x 300" long. Other sizes may be available upon request. Rubylith® RM3 is a high tack ruby film coated onto 300-gauge polyester.

## Signage & Display – Substrate Materials



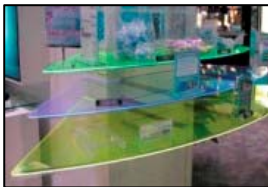
### Acrylic Sheets - Cast

Acrylic is an amorphous thermoplastic which is optically transparent, unaffected by moisture, and offers a high strength-to-weight ratio. Acrylic offers high light transmittance and can be easily heat-formed without loss of optical clarity. Prolonged exposure to moisture, or even total immersion in water, does not significantly effect the mechanical or optical properties of this outstanding economical and multi-purpose material. Cast acrylic is 17 times stronger than glass & is easily machined & thermoformed.



### Acrylic Sheets – Extruded or Continuous Process

Extruded Acrylic Sheet offers a tighter thickness tolerance than cast acrylic sheet. It is an excellent glazing, signage, window or display material that is unaffected by moisture, and offers a high strength-to-weight ratio. Acrylic sheets offers high light transmittance and can be easily heat-formed without loss of optical clarity. Professional Plastics stocks both Acrylite® FF & Lucite® CP (continuous process) acrylic sheets in a wide variety of thicknesses and colors.



### Acrylite® GP Fluorescent Sheet

Fluorescent ACRYLITE® GP acrylic sheet is available in six attention-grabbing neon colors with vivid edge color and long fluorescent life. Recommended for indoor use, the sheet provides superior uniformity of surface and edge color. For outdoor use, we recommend ACRYLITE GP FLW fluorescent acrylic sheet which is a totally weatherable and offers long fluorescent life and superior thermoformability.



### Acrylite® P-99 Non-Glare Sheet

Acrylite® P-99 sheet, continuously manufactured, is lightweight and easily fabricated, offering a non-glare surface that can be painted or silk-screened. It is ideal for picture framing and display windows.

Acrylite® is available in thicknesses: .060" .080" .098" .118", .177" & .236"

- Standard Sheet Size: 48" x 96", 51" x 100" (upon request)



### Acrylite® SG Sign Grade Acrylic

Acrylite® SG acrylic sheet, the universal acrylic sheet for the sign market, is rigid, tough, easily fabricated and machined, and resists chipping and melting. It is perfect for channel lettering, flat and pan faced sign, and vacuum formed letter applications. Available in clear, translucent or opaque, ACRYLITE SG sheet consistently performs in both indoor and outdoor sign applications. Choose from seven colors or colorless. Available on reels.





### Acrylite® Crystal Ice acrylic sheet

Acrylite® Crystal Ice acrylic sheet is continuously manufactured, with a frosted surface on one or both sides. The cool frosted finish diffuses light to enhance your design options and backlit applications. Its textured surface resists fingerprints and is easy to clean. In three translucent colors – Colorless, Glass Green and Blue Ice – Crystal Ice has the appearance of etched glass and is a beautiful choice for displays, store fixtures, partitions, and wall panels.



### Acrylite® Radiant

Acrylite® Radiant acrylic sheet creates dazzling color changes and dramatic eye-catching movement, all without specialty lighting! Radiant sheet magically shimmers with iridescent colors that change as the viewer moves. Using ambient light to create its own lighting effects, Radiant sheet energizes P-O-P displays, signs, and store fixtures. It can be cut, routed, drilled, line bent, polished and thermoformed in slight draws or shallow forms.



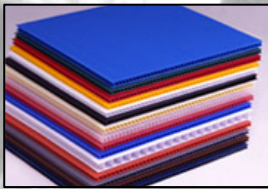
### Acrylite® Sterling - Metallic Acrylic Sheet

The Sterling Collection of Acrylite acrylic sheet is a brilliant advance in captivation. A stunning new line of acrylic patterns that gleam with an unmistakable reflective, metal-like appearance. Acrylite Sterling is a terrific choice for almost any kind of P\_O\_P and store fixture application. And, with five different decorative patterns, you have more creative freedom than you could ever imagine. Acrylite Sterling is available in five decorative patterns. - Shards - Confetti - Radial - Diamond Plate – Linen



### Celtec® Expanded Rigid Foam PVC

Celtec Displayboard is a foamed polyvinyl chloride (PVC) sheet whose extraordinary combination of features makes it ideal for signage, exhibits, store displays, POP, Kiosks, screen printing and more. The surface is a smooth matte finish that makes it ideal to paint or laminate to secondary substrates. Celtec also has good screw and staple retention which makes it ideal for stage prop design, cabinetry and other wood replacement projects. Sheets are tough, high-strength and lightweight, and can be ordered in a wide range of sizes, thicknesses and colors.



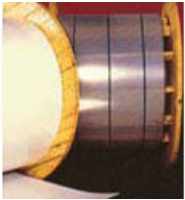
### Coroplast® - Fluted Polypropylene Sheet

Coroplast is a high-quality polypropylene twinwall profile sheet formulated for use in the screen printing, display, and packaging markets. Coroplast uses a copolymer resin in order to increase impact and low temperature performance. Coroplast retains the ability to be flexed an unlimited number of times without breaking. It is chemically inert, with a NIL pH factor and most oils, solvents and water have no effect. Performs well under adverse weather conditions or when exposed to harsh chemicals. Coroplastic performs well under adverse weather conditions or when exposed to harsh chemicals.



### Duraplast® I & II

Duraplast® I High impact polystyrene facers (.015") combined with a high-density, fine celled foam center makes these durable all-plastic foamboard moisture proof and extremely warp resistant. The smooth washable surfaces offer high definition of color and superior image quality when screen-printed. Duraplast I sheets are pH neutral and are designed for lamination using pressure sensitive and liquid adhesives. Makes an excellent replacement for GatorFoam. Duraplast® II - Same face liners as Duraplast I but with a High Density white expanded polystyrene foam core.



### Duraplex® - Impact Modified Acrylic Reels

Duraplex Impact Modified Acrylic Sheet offers superior impact strength for many applications including signage, displays, skylights, windows, doors, and any interior or exterior application where durability is a requirement. It's an economical alternative to polycarbonate sheet for providing superior weatherability and thermoforming capabilities. Available in thicknesses of .040" to 500", and widths up to 104". Impact blend percentages include 10, 15, 25, 35, 40, 50, 75 and 100, with custom blends available.



### Expanded PVC Sheet

Rigid expanded foam polyvinyl chloride (PVC) is a material whose extraordinary combination of features makes it ideal for commercial signage. Expanded PVC Sheets are Economical, Thermoformable, Dimensionally Stable, Light and Weatherproof. Brands Include: Komatex®, Celtec®, Sintra®, Intefoam®



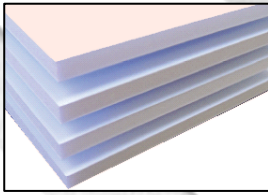
### Fiber Brite® Fiberglass Sheet

FiberBrite™ is the sign industry's alternative to expensive laminates, labor-intensive MDO, damage prone aluminum and climatically unstable PVC. It is a fiberglass reinforced plastic (FRP) sign panel that was developed as a replacement for aluminum by Owens Corning, the Department of Transportation, and the Plastic Institute. FRP is the only plastic to meet the recommended plastic traffic control sign panel specifications. With a 10-year warranty, FiberBrite™ is the best panel to use around water, chemicals, electricity or where UV outdoor resistance and durability are important. It is available in 57 shapes and sizes and may be fabricated with standard sign shop and screen print equipment.



### High-Impact Polystyrene - HIPS

High Impact Polystyrene (HIPS) has great dimensional strength, balanced properties of impact strength and heat resistance, is easily machined, and is relatively low in cost. HIPS offers durability to temperatures as low as -20F. Emits no corrosive or noxious fumes & is 100% recyclable. Available in standard 48" x 96" sheets, or customer Sheets & Rolls.



#### **Insite Reveal® Foam Board**

Insite Reveal is a multipurpose foamboard that utilizes new innovative foam technology. Insite Reveal features a new Reveal foam center that is specifically designed with memory to retain its thickness during processes such as mounting, laminating, screen-printing, and die-cutting. Insite Reveal incorporates new smooth paper liners with heavier surface coatings that promote superior ink holdout and increased print gloss while screen-printing. The coating also acts as a barrier to minimize adhesive absorption while maximizing mounting and laminating speeds. Applications include signs, displays, exhibits, photo mounting, digital imaging, framing, crafts, toys, sets, props, and presentations. Excellent Replacement for Foam-X® or Fome Cor®



#### **InteFoam® - Expanded PVC Foam Board**

InteFoam® is an expanded PVC foam board with a matte finish. It is lightweight, durable, chemical resistance, fire retardant capabilities and available in a variety of colors in 3mm and 6mm, gauges ranging from 1mm to 25mm (1/32" to 63/64"). InteFoam® is an excellent substrate for point-of-purchase displays and signs, and is the substrate of choice for screen-printing and digital printing. Features a consistently smooth and abrasion resistant surface for easy paint and excellent ink adhesion produces sharp, vivid colors – a printed image of superior quality! It can be thermoformed and has a variety of applications in sign, marine, and graphic arts industries.



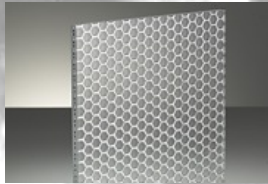
#### **Komatex® - Expanded PVC Sheet**

Komatex® is a lightweight closed-cell, free foam, rigid PVC sheet. It is homogeneously colored with a matte finish that is tough and versatile enough for many of today's applications. Komatex is available in 20 standard vibrant colors and a variety of thicknesses and sizes to fit most uses. The matte surface is the perfect substrate for screen printing, painting, laminating, vinyl lettering and forming projects.



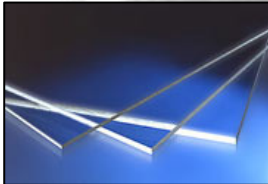
#### **Lumasite® Sheet**

LUMAsite® reinforced acrylic sheets and diffusers can be used for construction-related applications, including architectural and display lighting, partitions, translucent glazing panels, illuminated walls, window treatments, and sign backgrounds. Shatterproof sheets cast from 100% acrylic or modified polyester resins. The superior toughness and rigidity of LUMAsite® sheets are the result of reinforcement by an immensely strong web of glass fibers. In sign and display whites and colors these fibers are not visible. In most architectural and designer panels the fibers are deliberately visible, lending a "silken cobweb" effect.



#### **Lumicor® Sheet**

Lumicor® blends the versatility of high performance resins with the vast world of decorative materials to bring light, texture and color to enhance any environment. Its unique decorative appearance is the result of a patented process that incorporates interesting core elements within clear resins. Lumicor® can be used in an endless variety of vertical, horizontal, and 3-dimensional applications including: furniture, wall partitions, countertops, cabinet doors, sinks, displays, light fixtures, ceiling tiles, shower doors, office relites, signs and shelving. Comes in Metallics, Neutrals, Patterns, Colorways, Embosses, Botanicals & Woodworks.



#### **PETG Sheet**

PETG / Spectar® Co-polyester sheet is a thermoplastic sheet used in engineering applications. PETG offers the capability to produce complex shapes, precise details, deep draws and compound curves without worrying about durability. It's easily formed, die-cut and punched. It brings increased design freedom and lower fabrication costs. In sheet form, PETG has the impact strength and fabrication ease that acrylic can't touch, with the durability to significantly reduce packaging and shipping costs.



#### **PolyCarve® HDPE Sign Stock**

PolyCarve® thermoplastic engraving sign stock made to permanently resist the destructive outdoor elements, and certain indoor environments. PolyCarve is a high density, UV stabilized polyethylene consisting of two skins (nominal thickness of .090-.100") outside a core of a different color. This creative color contrast makes it ideal for engraving signs, pictures, company logos & more. Polycarve resists stresses of routing and engraving, it is rain & sun resistant, impact resistant, & is available in several colors.



#### **Polycarbonate Sheet**

Makrolon® GP (General Purpose) polycarbonate sheet is a polished surface, UV-stabilized polycarbonate product for use in sign applications. Offering economy and high performance, Makrolon GP polycarbonate sheet and reel meets or exceeds the physical properties of any product in its class. Makrolon GP polycarbonate material is backed by a five year warranty against breakage. Available in Clear (GP), Abrasion-Resistant (AR1,AR2), Fire-Retardent (F/R), Sign Grade (SG), & Solar (SL) grades.



# makroFOL®/BAYFOL® Films Selection Guide

Resin	Texture Designations		Products Bayer	Comments
	1st Surface	2nd Surface		
PC	Gloss	Gloss	DE 1-1	Virgin Resin—No Additives
	Gloss	Gloss	DE 1-1	Medical Grades
	Gloss	Fine Matte	DE 1-4	No Masking Required—Low Internal Stress
	Gloss	Fine Matte	DE 1-4 White 3723	White
	Gloss	Micromatte	DE 1-mm	Low Stress for Accurate Registration
	Fine Velvet	VF Matte	DE 6-2	Printable Velvet Surface
	Velvet	Matte	PCVM	Standard/Velvet Matte
	Velvet	VF Matte	DE 7-2 CG	Tight Gloss Control—1" Surface
	Velvet	VF Matte	DE 7-2	Minimize Pin Holing
	Velvet	VF Matte	DE 7-2 (6)	Black
	Velvet	Gloss	PCVE	High Color Retention
	Velvet	Gloss	VLG 7-1	Very Low Gloss
	Suede	Matte	PCSM	Standard Suede Matte
	Gloss	Gloss	LS 1-1	Low Stress DE 1-1
Light Diffusion	Fine Matte	Fine Matte	BL 2-2 820812	Light Diffusing
	Fine Matte	Matte	BL 2-4 820816	Light Diffusing
	Fine Velvet	VF Matte	BL 6-2 820812	Light Diffusing
	Fine Velvet	VF Matte	BL 6-2 820802	Black Translucent
	Fine Velvet	VF Matte	BL 6-2 820803	Minimum Pigment Contact
	Fine Matte	Fine Matte	LT 4-4	Antiglare
	Fine Matte	Matte	LT 6-4	Antiglare
	Fine Velvet	Fine Matte	LT 6-4 900009	Antiglare
PC Blends				
	Fine Velvet	VF Matte	CR 6-2	Increased Actuation Life
	Gloss	Matte	CR 1-4	Increased Actuation Life
	Gloss	Micromatte	DPF-5023	Increased Actuation Life
FR Materials	VF Matte	Matte	AS-A 2-4	Anti-Stat
	Velvet	Gloss	PCVE 600	FR White—Flame Retardant
	Velvet	Matte	PCVM 600	FR White—Flame Retardant
Weatherable	Velvet	VF Matte	FR 7-2	FR Clear—Flame Retardant
	Velvet	Matte	EPC VT7M	Chemical/UV Resistant
	Velvet	Gloss	EPC VT/E	Chemical/UV Resistant
Enhanced Films	Gloss	Gloss	EPC ETE	Chemical/UV Resistant
	Velvet	Matte	UV1 7-2	UV Resistant
	Velvet	VF Matte	DPF-5014	High Heat
	Gloss	Matte	DPF-5072	Metallic Film
	Velvet	VF Matte	DPF-5073	Soft Feel—Weatherable

# Typical Properties of Makrolon®/Bayfol® Polycarbonate Films

Property*	Test Method	Units	DE 1-1 LS 1-1	DE 1-mm	DE 1-4	DE 1-4 Translucent White 3723	DE 6-2	DE 7-2	DE 7-2 (6)	DE 7-2 CG	VLG 7-1	PCVM	PCVE	PCSM
<b>Physical</b>														
Specific Gravity	ASTM D-792		1.20	1.20	1.20	1.20	1.20	1.20	1.20	1.20	1.20	1.20	1.20	
Conversion Factor		ft <sup>3</sup> /lb-mil	160	160	160	160	160	160	160	160	160	160	160	1.20
Water Absorption (Immersion at 73°F 24 hr.)	ASTM D-570	%	0.33	0.33	0.33	0.07	0.33	0.33	0.11	0.33	0.33	0.33	0.33	0.33
First Surface Gloss-60° angle, black inked second surface	ASTM D2457	gloss unit	≥ 98	≥ 98	≥ 98	≥ 98	3.0 - 6.2	3.0 - 4.5		3.0 - 4.0	2.0 - 4.0	3.0 - 4.5	5.0 - 10.0	
First Surface Roughness, R3Z	ISO 4288	microns	≤ 0.5	≤ 0.5	≤ 0.5	≤ 0.5	11 - 17	16 - 23	16 - 23	16 - 23	18 - 27	16 - 23	11 - 21	
<b>Optical</b>														
Haze	ASTM D-1003	%	0.3	20.0		99.0					87.3			
Light Transmission	ASTM D-1003	%	91	91	90	31	90	90		90	90.3	90	90	89
Yellowness Index	ASTM E313		1	1	1		1	1	1	1	1.9	1	1	1
<b>Mechanical</b>														
Tensile Strength, Yield	ASTM D-882	psi	8,600	8,600	8,600	8,860	8,600	8,600	8,080	8,600	8,600	8,600	8,600	8,600
Tensile Strength, Break	ASTM D-882	psi	8,700	8,700	8,700	8,360	8,700	8,700	8,100	8,700	8,700	8,700	8,700	8,700
Elongation @ Break	ASTM D-882	%	120	120	120	110	120	120	120	120	120	120	120	120
Tear Strength, Initiation	ASTM D1004	lb/in	1,100	1,100	1,100	645	1,100	1,100	740	1,100	1,100	1,100	1,100	1,100
<b>Thermal</b>														
Heat Deflection Temperature														
264 psi load	ASTM D648	°F	270	270	270		270	270		270	270	270	270	270
66 psi load		°F	288	288	288		288	288		288	288	288	288	288
Vicat Softening Temperature, Rate A	ASTM D1525	°F	315	315	315		315	315		315	315	315	315	315
<b>Flammability</b>														
UL 94 V-0	UL 94	min. thickness (in)												
UL 94 V-2	UL 94	min. thickness (in)	0.015	0.015	0.015		0.015	0.015	0.015	0.015		0.015	0.015	0.015
UL 94 VTM-0	UL 94	min. thickness (in)												
UL 94 VTM-2	UL 94	min. thickness (in)	0.005	0.005	0.005		0.005	0.005		0.005		0.005	0.005	0.005
Burn Rate	FMVSS302	mm/min.	≤ 100	≤ 100	≤ 100	translucent white	≤ 100	≤ 100	≤ 100	≤ 100	f. velvet/ gloss	≤ 100	≤ 100	≤ 100
<b>Features</b>														
			gloss/gloss, low stress	micromatte	gloss/f. matte		f. velvet/vf. matte	velvet/vf. matte	black	tight gloss range	f. velvet/ gloss	velvet/matte	velvet/gloss	suede/matte

\*These typical properties are provided as general information only. They are approximate values and are not part of the product specifications.



<b>Fullerton, California</b> 1810 E. Valencia Dr. Fullerton, CA 92831 800-878-0755 714-446-6500 714-447-0114 FAX	<b>Phoenix, Arizona</b> 4449 S. 38th Pl. Phoenix, AZ 85040-2943 800-445-3303 602-437-4555 602-437-0885 FAX	<b>Tualatin, Oregon</b> 19741 SW 95th Pl. Tualatin, OR 97062 800-616-7236 503-612-1661 503-612-1771 FAX
<b>San Jose, California</b> 2175 Kruse Dr. San Jose, CA 95131-1214 800-523-2807 408-434-9410 408-434-9433 FAX	<b>Denver, Colorado</b> 5885 Stapleton Drive North Unit C-313 Denver, CO 80216 800-453-3502 303-355-0138 303-331-9816 Fax	<b>Houston, Texas</b> 10641 S. Sam Houston Pkwy W. Building 5, Suite 100 Houston, TX 77071 877-216-7767 281-879-4500 281-879-4502 FAX
<b>Sacramento, California</b> 2940 Ramco Street # 100 West Sacramento, CA 95691 800-338-2011 916-362-1600 916-376-0949 FAX	<b>Kalispell, Montana</b> 468 Ash Rd. Unit A Kalispell, MT 59901 800-223-8360 406-752-6780 406-752-6782 FAX	<b>Richardson, Texas</b> 1371 N. Glenville Dr Richardson, TX 75081 800-654-7069 214-575-5400 214-575-5410 FAX
<b>San Diego, CA Sales Office</b> 8334 Clairemont Mesa Blvd. Suite 210 San Diego, CA 92111 (858) 637-2800 (858) 637-2805 FAX	<b>Cheektowaga, New York</b> 3242 Union Road Cheektowaga, NY 14227 716- 686-9300 716-686-9310 FAX	<b>Ogden, Utah</b> 2670 Commerce Way Ogden, UT 84401 801-444-2429 801-544-5064 FAX
<b>Kent, WA</b> 6412 S. 196th St. Kent, WA 98032-1169 800-223-8360 253-872-7430 253-872-7704 FAX	<b>Cleveland, OH</b> 800 Resource Drive, Suite 12 Brooklyn Heights, OH 44131 888-995-7767 Toll-Free Phone 888-960-0001 Toll-Free Fax	<b>Professional Plastics Pte Ltd</b> 2 Woodlands Sector 1 # 01-17 Woodlands Spectrum 1 Singapore 738068 65-6266-6193 Phone 65-6266-6579 Fax E-Mail: <a href="mailto:asia-sales@proplas.com">asia-sales@proplas.com</a>



**Nationwide Toll-Free**  
**(800) 966-PROS 7767**  
e-mail: [sales@proplas.com](mailto:sales@proplas.com)

**More than 500 Materials Available Online at**  
**[www.professionalplastics.com](http://www.professionalplastics.com)**

