

KING DURASTYLE[®]

Custom Cabinet Door Program

Made with King StarBoard[®] ST



Custom Cabinet Door Program

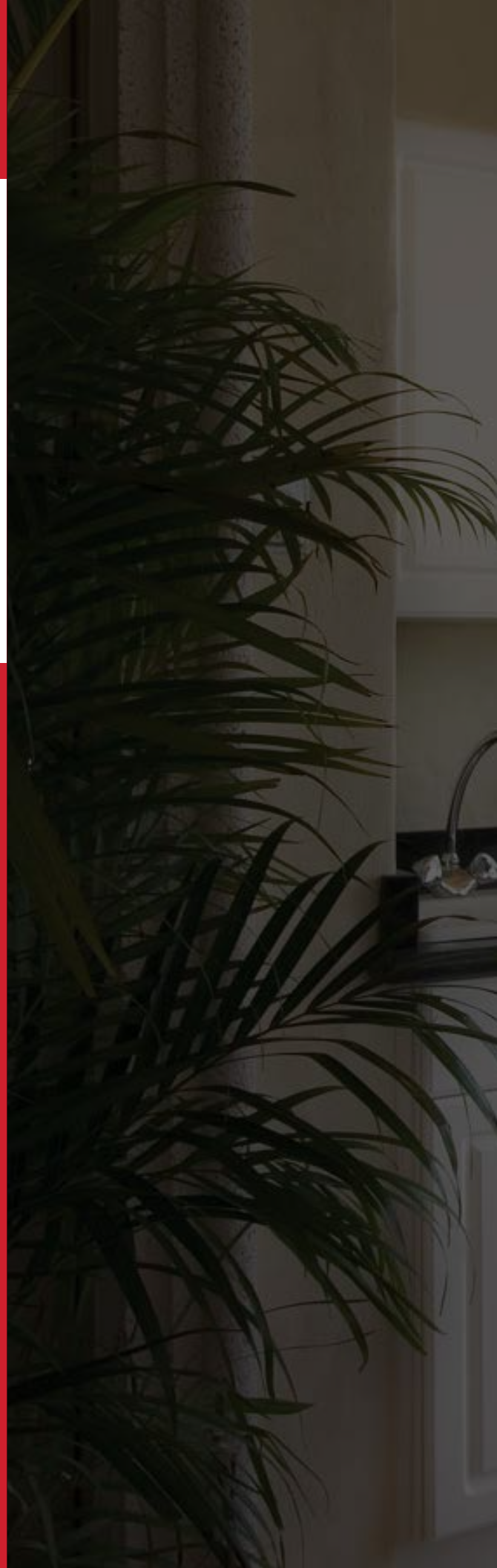
- Genuine King StarBoard® ST material
- Custom made to your specifications
- High quality CNC work for cutting profiles
- Perfectly match your cabinetry
- Custom engraving available
- Fast turnaround

A Lifetime of Function and Durability

King Plastic brings marine-grade toughness and designer styles to the building trades market. King DuraStyle® Custom Cabinet Door program combines King StarBoard® ST, the environmentally stabilized polymer building sheet, with designer styles and state-of-the-art CNC fabrication.

King StarBoard® ST is a unique and advanced polymer sheet that is 25% stiffer than the original marine-grade polymer, King StarBoard®. King StarBoard® ST is one of our most scratch-resistant polymer sheets and an excellent construction material.

The cabinet doors are high humidity and moisture resistant and will never need painting or refinishing. Inside or outside, the high-density polyethylene will not rust, delaminate or rot.



KING DURASTYLE®

CUSTOM CABINET DOOR PROGRAM

SHAKER DOOR STYLES

RAISED PANEL DOOR STYLES

BEADBOARD AND SLAB DOOR STYLES

OUTDOOR DURABILITY WITH INDOOR STYLE

LEAD TIMES

CUSTOM ENGRAVING

DOOR PROFILES

PHOTOS

SHAKER DOOR STYLES





SHAKER DOOR STYLES

The Shaker style is a classic and timeless design with its recessed panels to create a traditional or contemporary look.

King DuraStyle® Custom Cabinet Door Program combines King StarBoard® ST, the super tough polymer sheet, with designer styles and state-of-art CNC fabrication. The high-density polyethylene will not rust, delaminate or rot. King DuraStyle® doors work as well inside as they do in outdoor areas where there may be water, high humidity and moisture. They will never need painting or re-finishing.

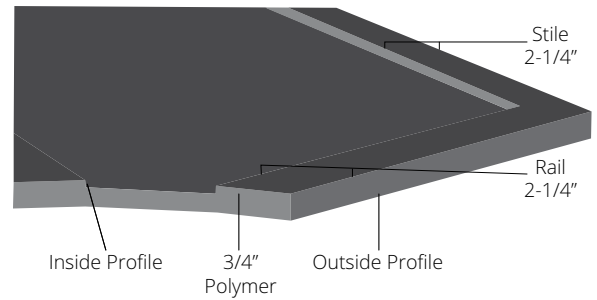
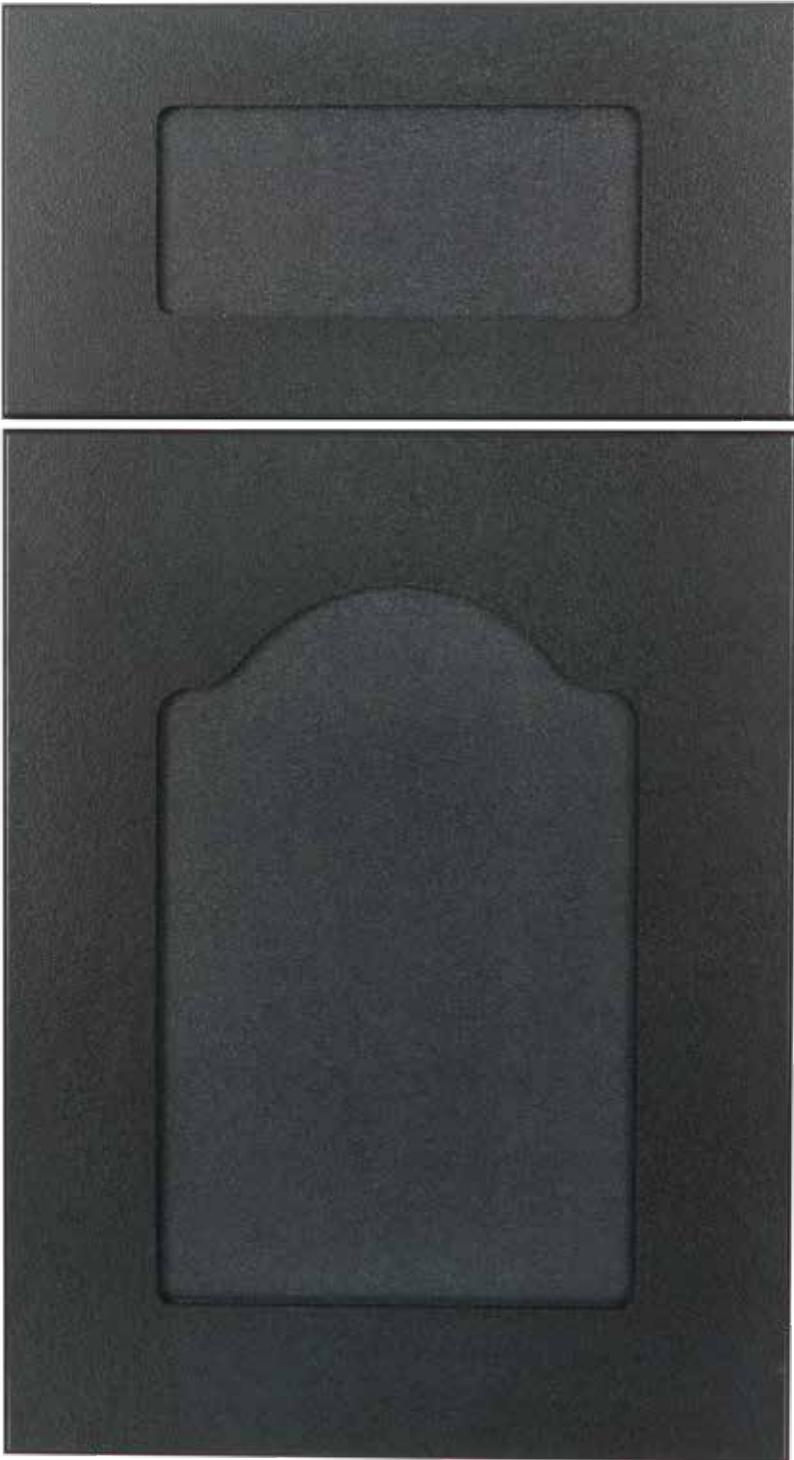
The doors come in several styles and ten standard colors. Custom styles, sizes and colors are available upon request.

Roman

KING
DURASTYLE®

Shaker

DOOR STYLES



Inside Profile: Flat

Outside Profile: Radius

KDS102

Colors:



Black



Mocha
Brown



Nutmeg



Indigo



Charcoal
Gray



Slate Gray



Dolphin
Gray



Sanshade



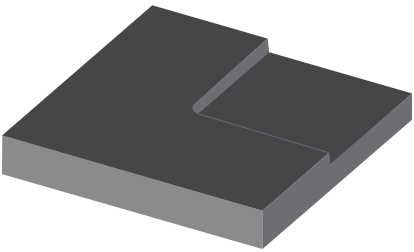
Seafoam



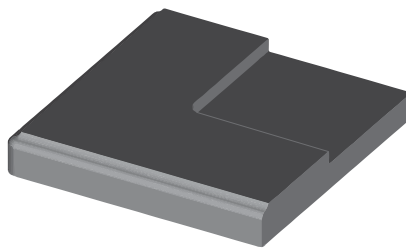
White/
White



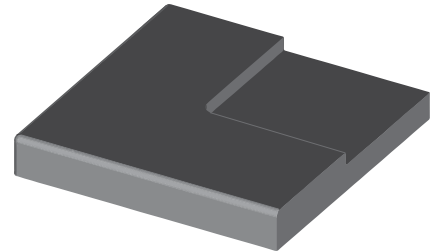
Inside Profile: Flat
Outside Profile: Flat
KDS100



Inside Profile: Flat
Outside Profile: Ogee
KDS101



Inside Profile: Flat
Outside Profile: Radius
KDS102

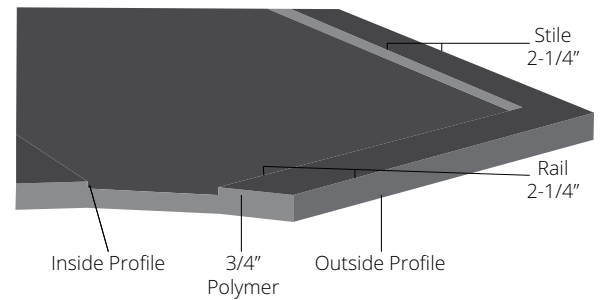
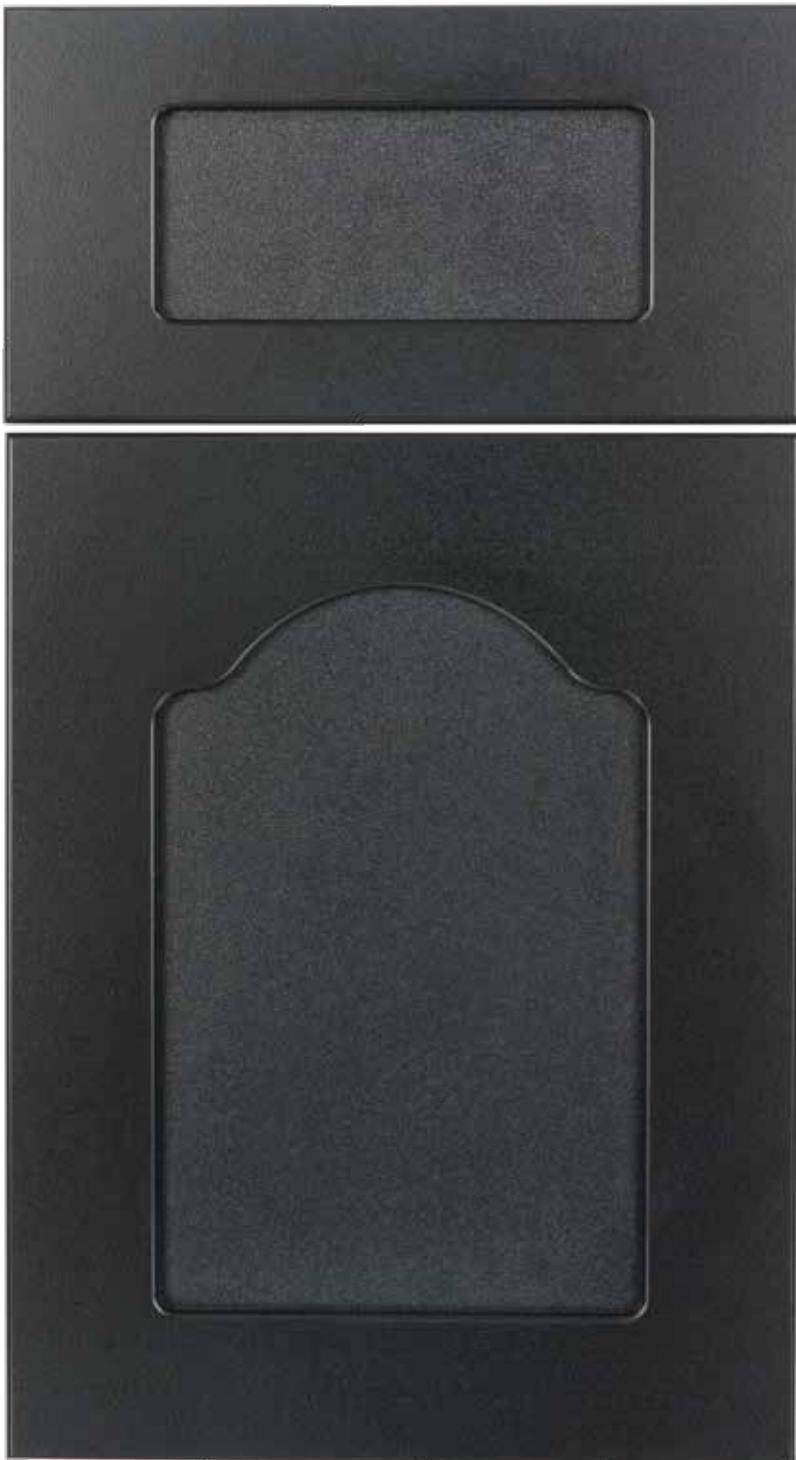


Roman

KING
DURASTYLE®

Shaker

DOOR STYLES



Inside Profile: Radius

Outside Profile: Radius

KDS105

Colors:



Black



Mocha
Brown



Nutmeg



Indigo



Charcoal
Gray



Slate Gray



Dolphin
Gray



Sanshade



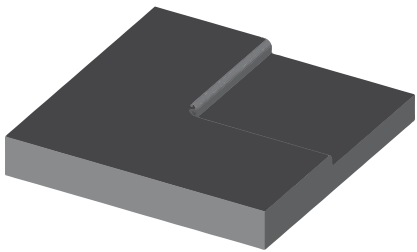
Seafoam



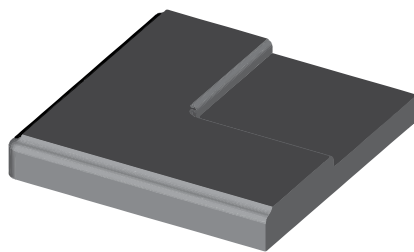
White/
White



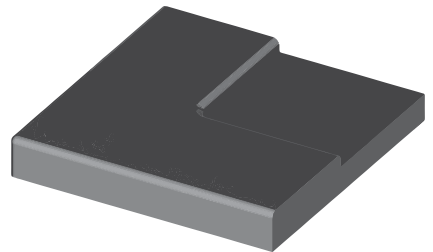
Inside Profile: Radius
Outside Profile: Flat
KDS103



Inside Profile: Radius
Outside Profile: Ogee
KDS104



Inside Profile: Radius
Outside Profile: Radius
KDS105

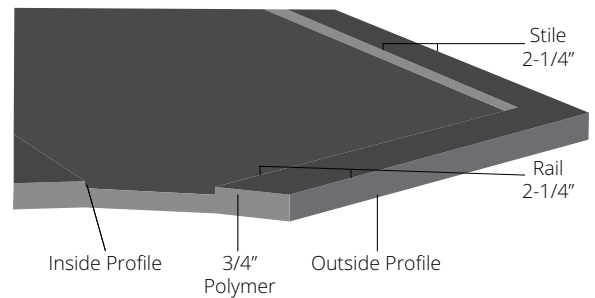


Kingston

KING
DURASTYLE®

Shaker

DOOR STYLES



Inside Profile: Flat

Outside Profile: Radius

KDS202

Colors:



Black



Mocha
Brown



Nutmeg



Indigo



Charcoal
Gray



Slate Gray



Dolphin
Gray



Sanshade



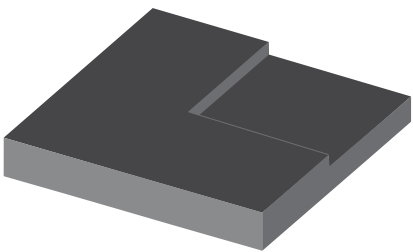
Seafoam



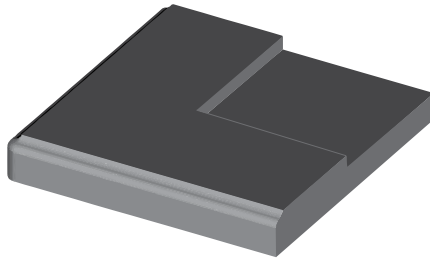
White/
White



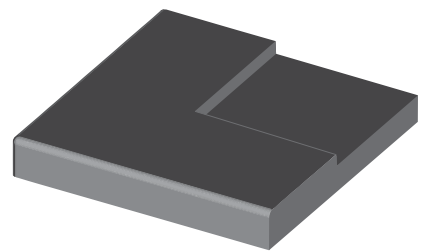
Inside Profile: Flat
Outside Profile: Flat
KDS200



Inside Profile: Flat
Outside Profile: Ogee
KDS201



Inside Profile: Flat
Outside Profile: Radius
KDS202

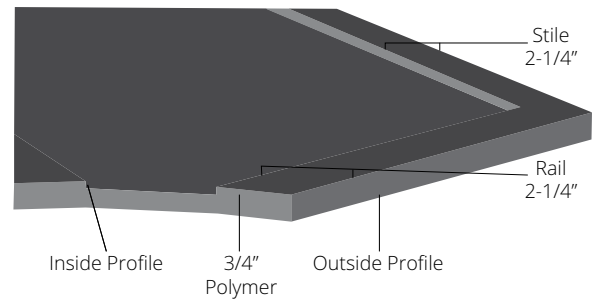


Beaded

KING
DURASTYLE®

Shaker

DOOR STYLES



Vertical Profile: Square Groove

Inside Profile: Flat

Outside Profile: Radius

KDS205

Colors:



Black



Mocha
Brown



Nutmeg



Indigo



Charcoal
Gray



Slate Gray



Dolphin
Gray



Sanshade



Seafoam

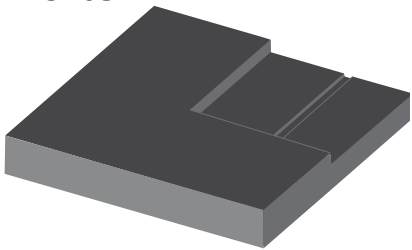


White/
White



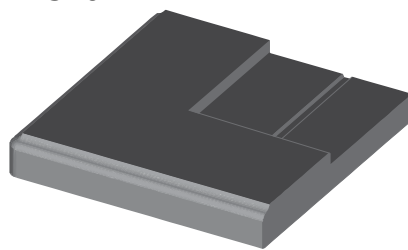
Vertical Profile: Square Groove
Inside Profile: Flat
Outside Profile: Flat

KDS203



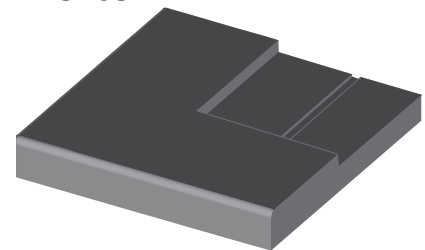
Vertical Profile: Square Groove
Inside Profile: Flat
Outside Profile: Ogee

KDS204



Vertical Profile: Square Groove
Inside Profile: Flat
Outside Profile: Radius

KDS205



RAISED PANEL DOOR STYLES





RAISED PANEL DOOR STYLES

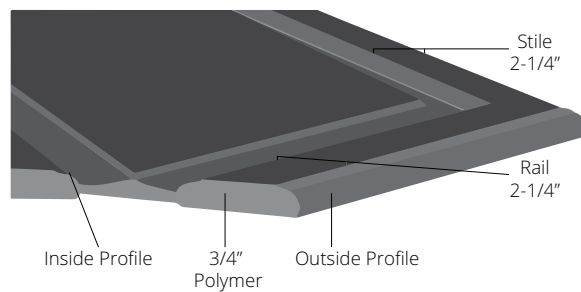
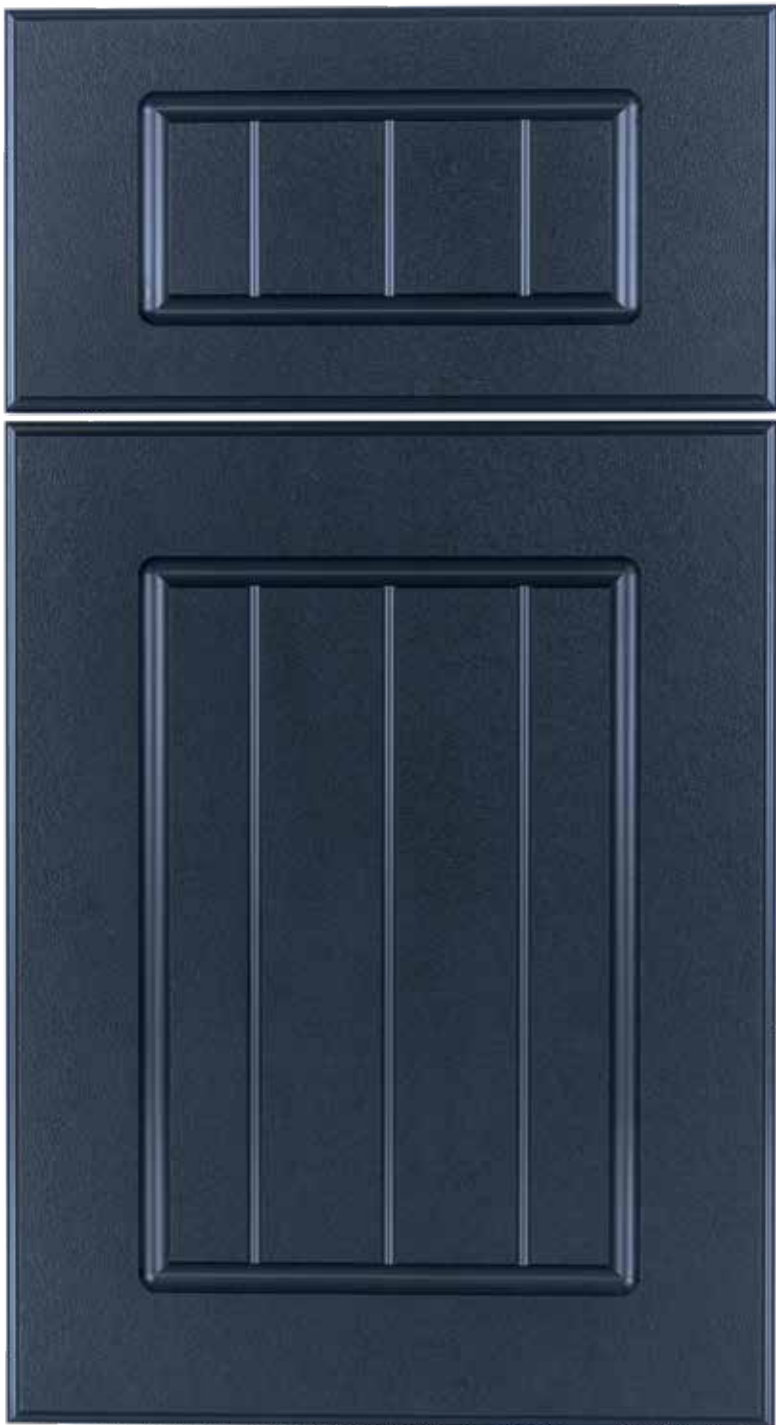
The Raised panel style offers a variety of profiles to create a classic look with sophistication.

King DuraStyle® Custom Cabinet Door Program combines King StarBoard® ST, the super tough polymer sheet, with designer styles and state-of-art CNC fabrication. The high-density polyethylene will not rust, delaminate or rot. King DuraStyle® doors work as well inside as they do in outdoor areas where there may be water, high humidity and moisture. They will never need painting or re-finishing.

The doors come in several styles and ten standard colors. Custom styles, sizes and colors are available upon request.

Monroe

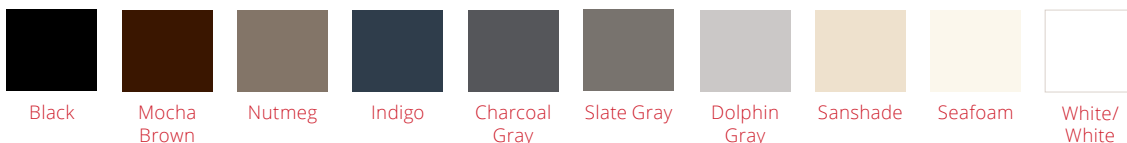
KING **DURASTYLE®** **Raised Panel** **DOOR STYLES**



Vertical Profile: Flute
Inside Profile: Large Flute
Outside Profile: Ogee

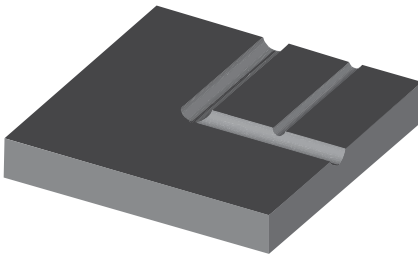
KDS301

Colors:

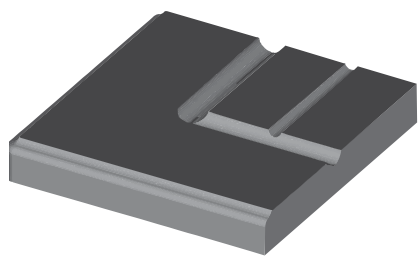




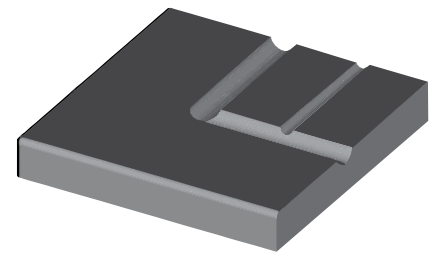
Vertical Profile: Flute
Inside Profile: Large Flute
Outside Profile: Flat
KDS300



Vertical Profile: Flute
Inside Profile: Large Flute
Outside Profile: Ogee
KDS301

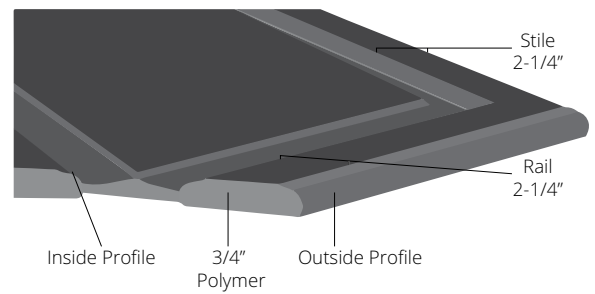
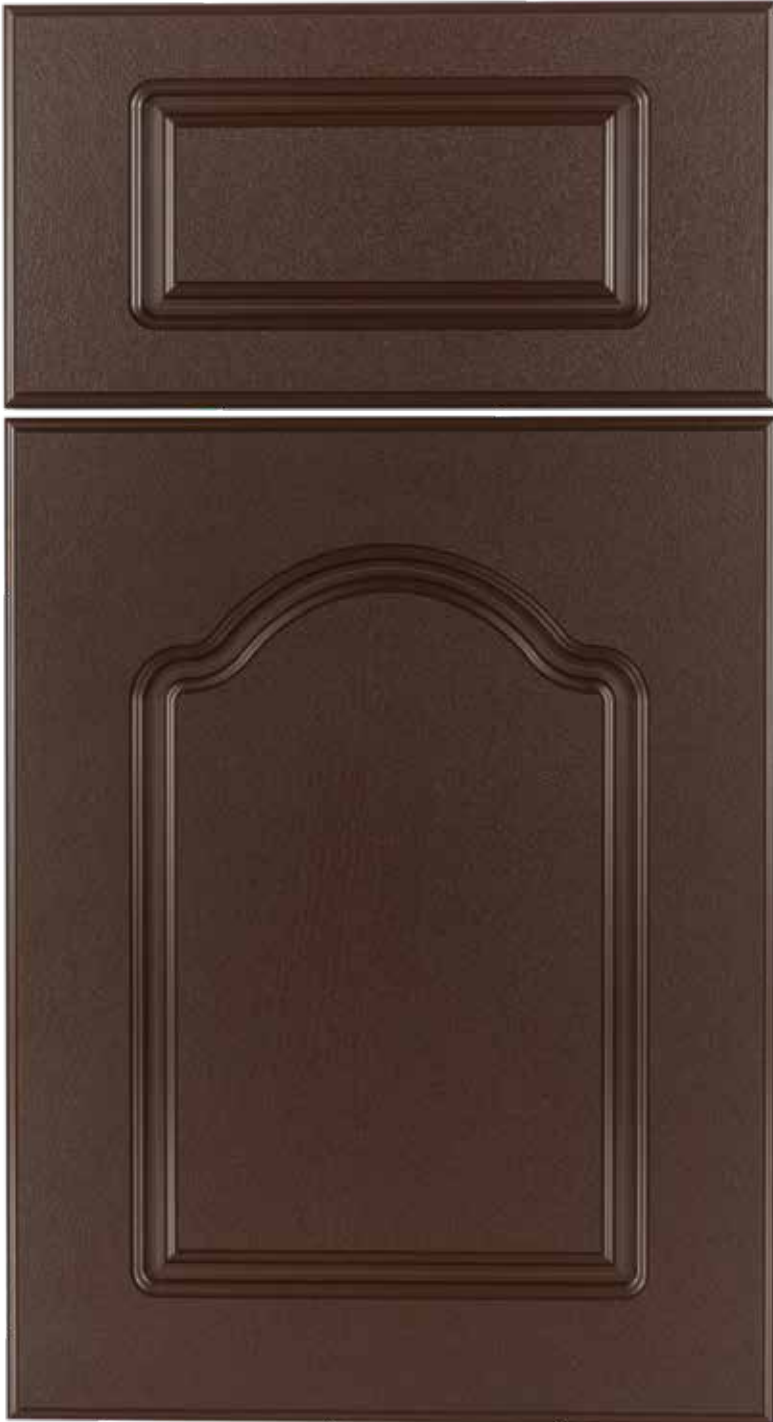


Vertical Profile: Flute
Inside Profile: Large Flute
Outside Profile: Radius
KDS302



Cathedral

KING
DURASTYLE®
Raised Panel
DOOR STYLES

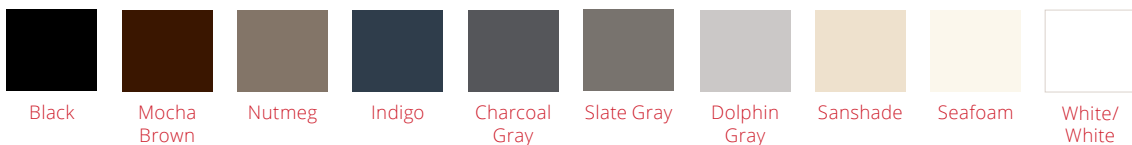


Inside Profile: Ogee Groove

Outside Profile: Ogee

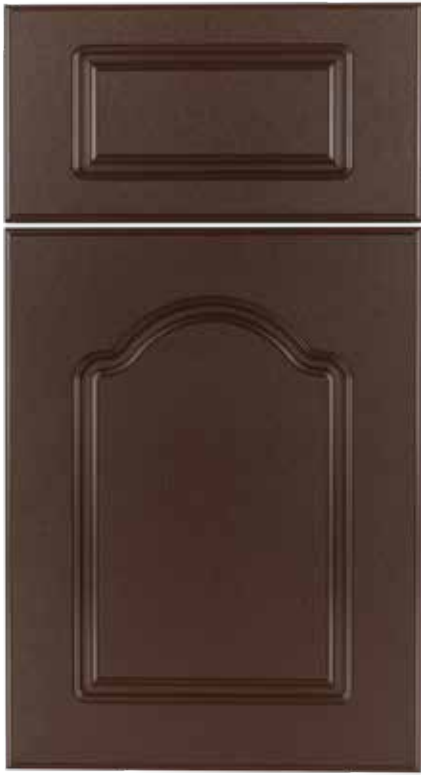
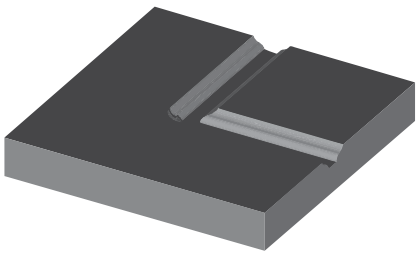
KDS401

Colors:

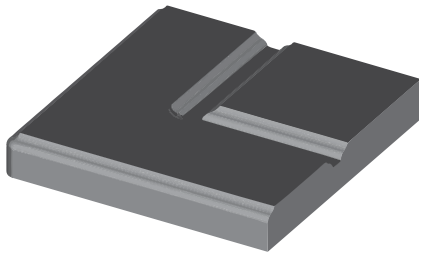




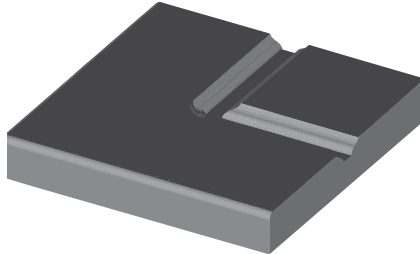
Inside Profile: Ogee Groove
Outside Profile: Flat
KDS400



Inside Profile: Ogee Groove
Outside Profile: Ogee
KDS401

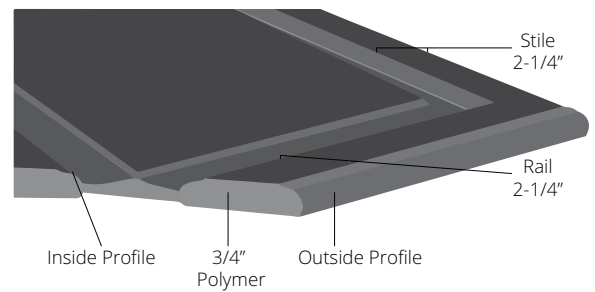
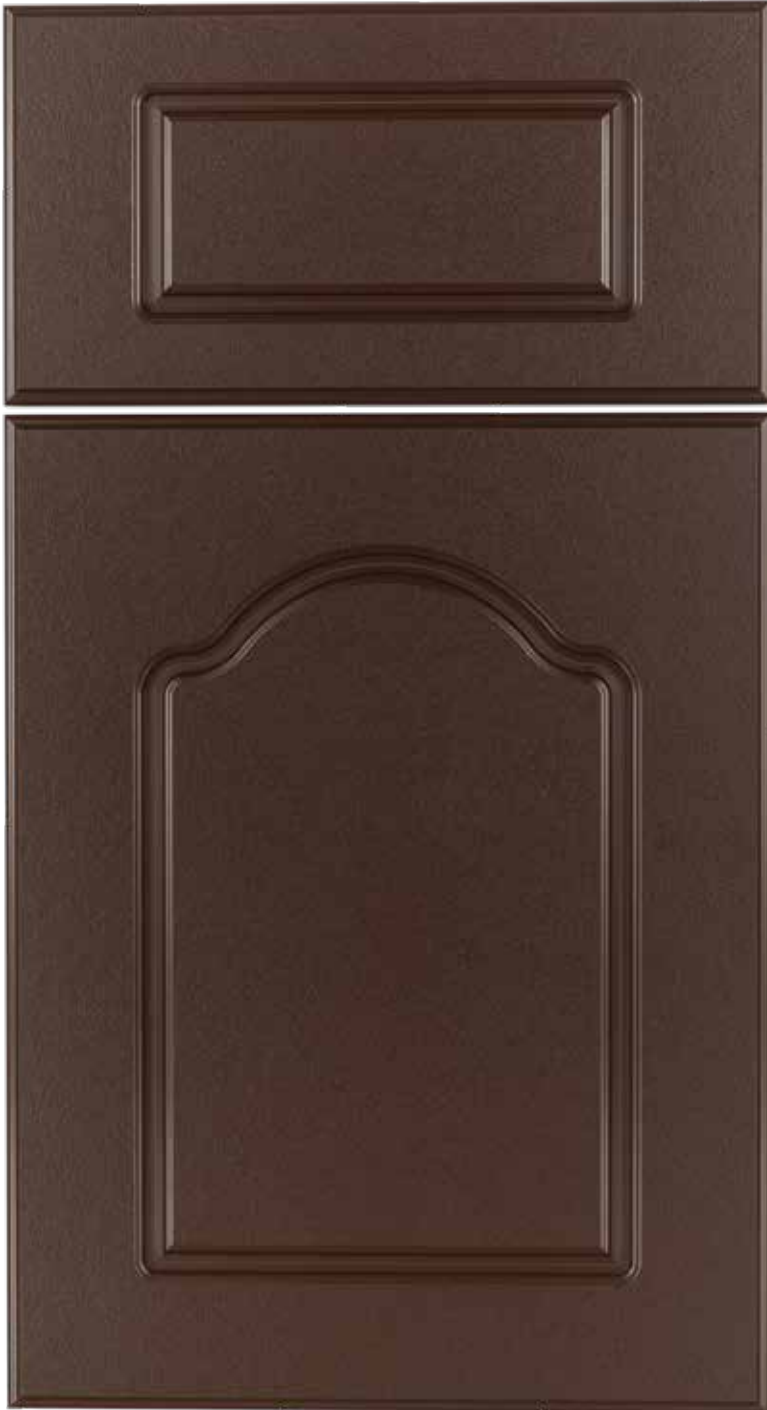


Inside Profile: Ogee Groove
Outside Profile: Radius
KDS402



Cathedral

KING
DURASTYLE®
Raised Panel
DOOR STYLES

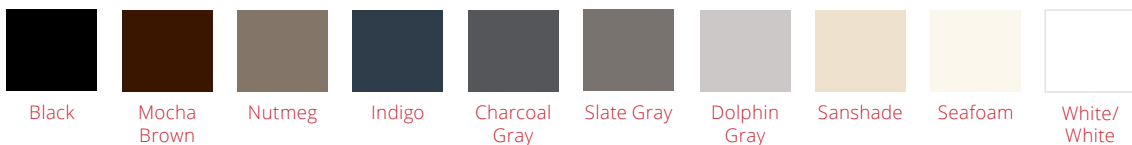


Inside Profile: Raised Ogee

Outside Profile: Ogee

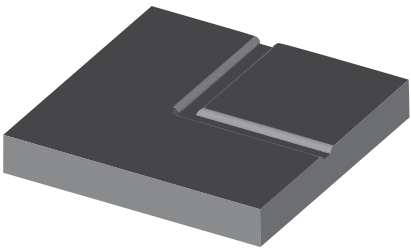
KDS404

Colors:

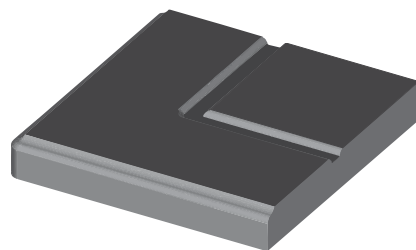




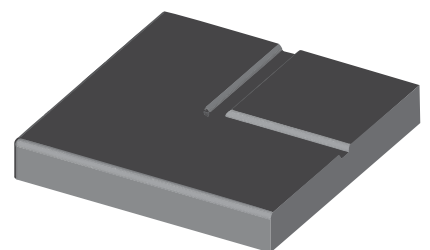
Inside Profile: Raised Ogee
Outside Profile: Flat
KDS403



Inside Profile: Raised Ogee
Outside Profile: Ogee
KDS404

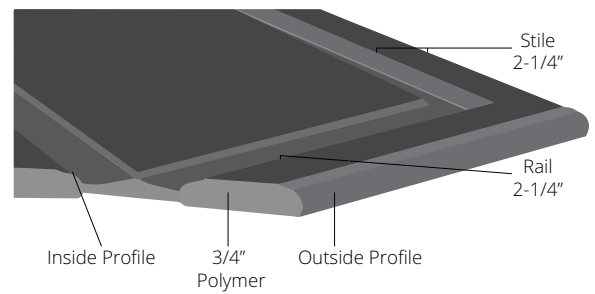


Inside Profile: Raised Ogee
Outside Profile: Radius
KDS405



Camden

KING **DURASTYLE®** **Raised Panel** **DOOR STYLES**

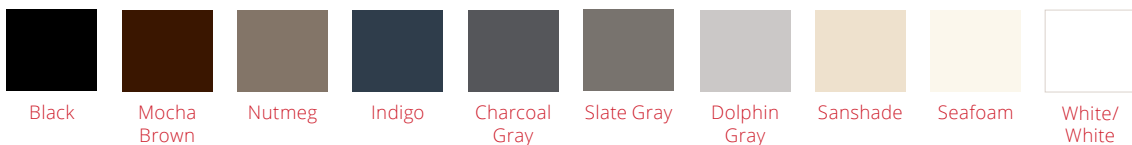


Inside Profile: Ogee Groove

Outside Profile: Ogee

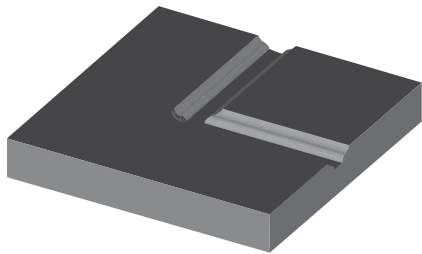
KDS501

Colors:

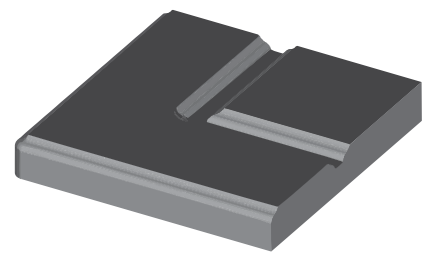




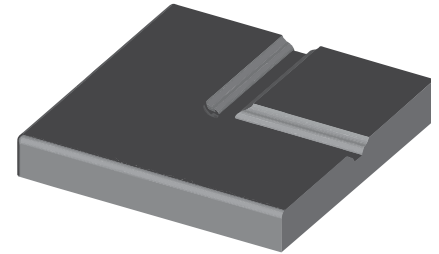
Inside Profile: Ogee Groove
Outside Profile: Flat
KDS500



Inside Profile: Ogee Groove
Outside Profile: Ogee
KDS501

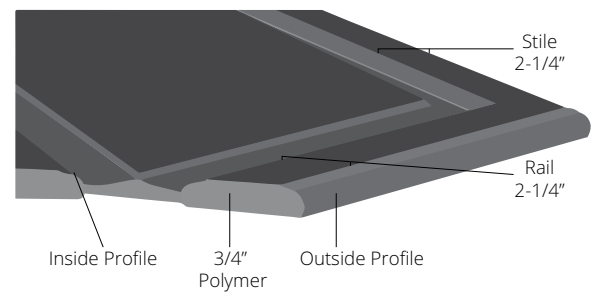


Inside Profile: Ogee Groove
Outside Profile: Radius
KDS502



Camden

KING **DURASTYLE®** **Raised Panel** **DOOR STYLES**

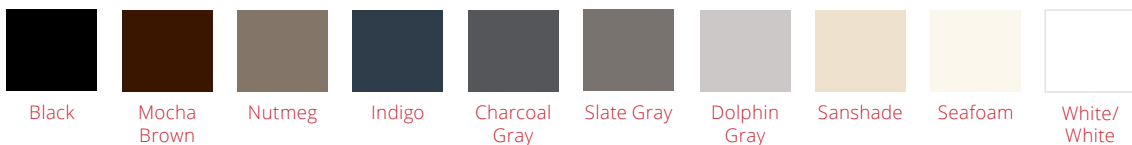


Inside Profile: Raised Ogee

Outside Profile: Ogee

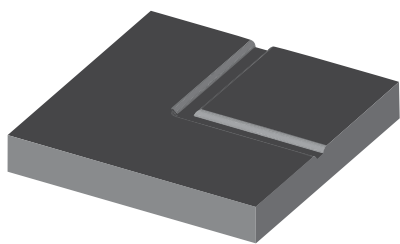
KDS504

Colors:

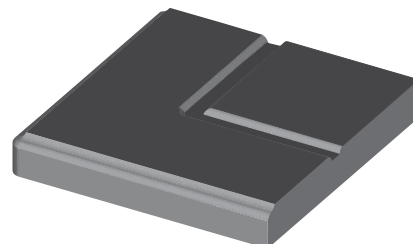




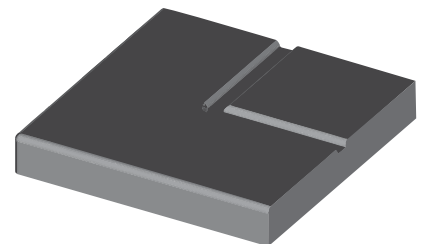
Inside Profile: Raised Ogee
Outside Profile: Flat
KDS503



Inside Profile: Raised Ogee
Outside Profile: Ogee
KDS504

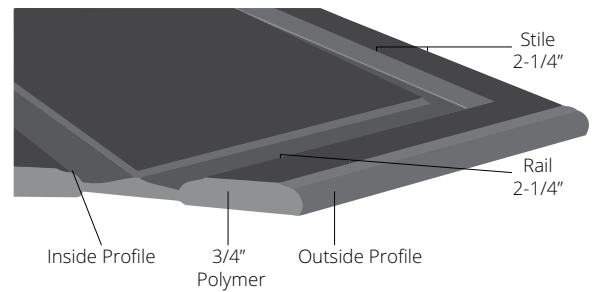
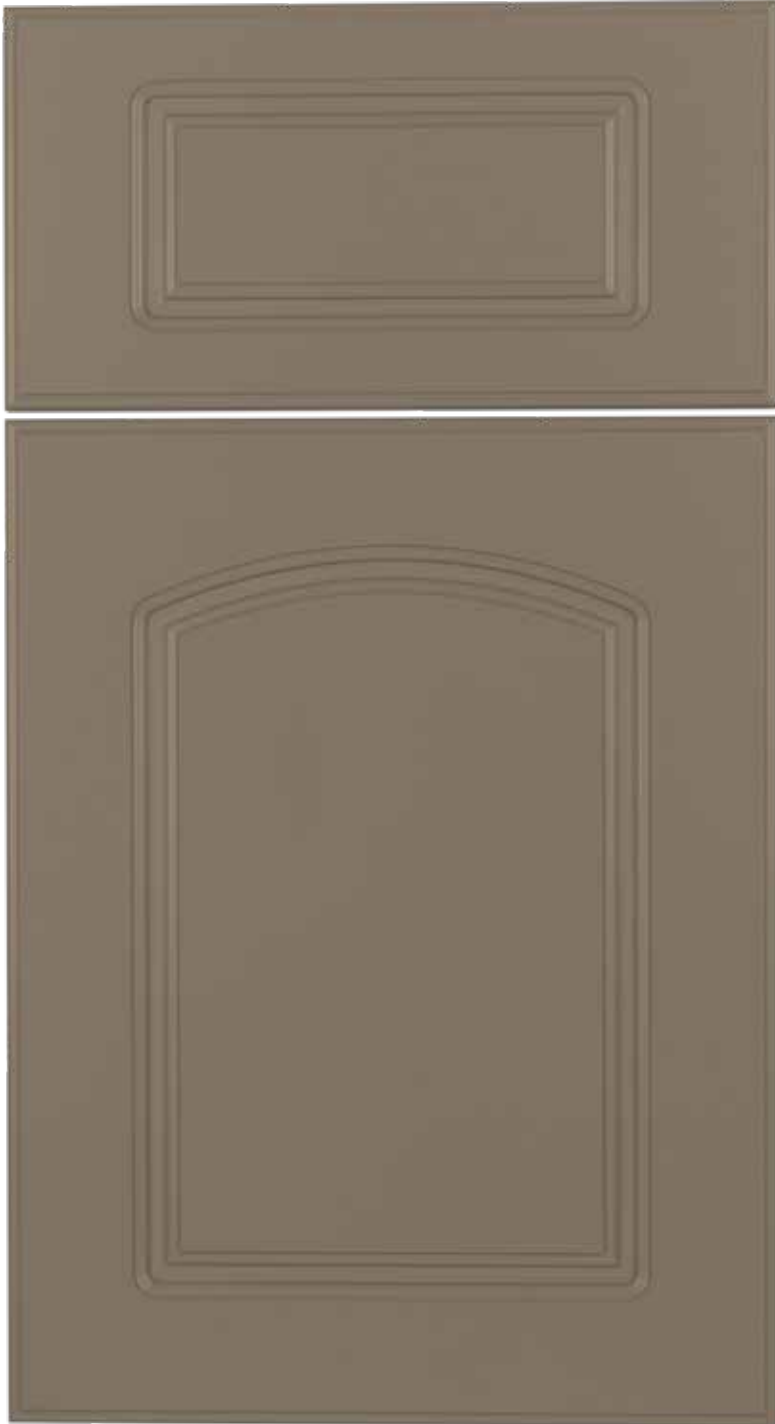


Inside Profile: Raised Ogee
Outside Profile: Radius
KDS505



Flagler

KING **DURASTYLE®** **Raised Panel** **DOOR STYLES**



Inside Profile: Ogee Groove

Outside Profile: Ogee

KDS601

Colors:



Black



Mocha
Brown



Nutmeg



Indigo



Charcoal
Gray



Slate Gray



Dolphin
Gray



Sanshade



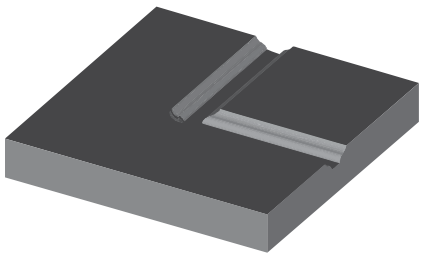
Seafoam



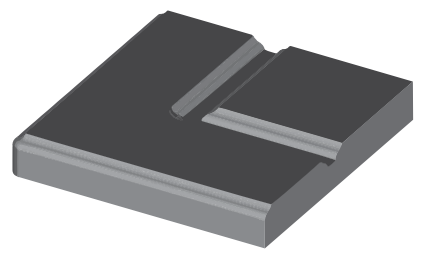
White/
White



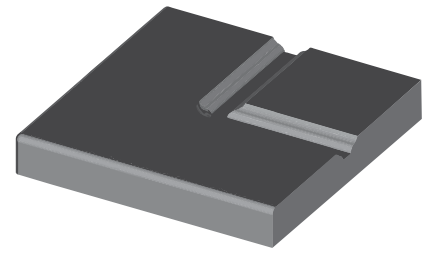
Inside Profile: Ogee Groove
Outside Profile: Flat
KDS600



Inside Profile: Ogee Groove
Outside Profile: Ogee
KDS601

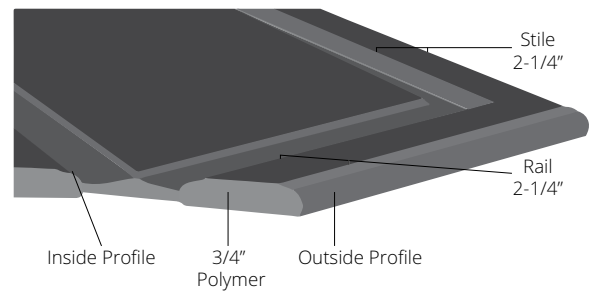
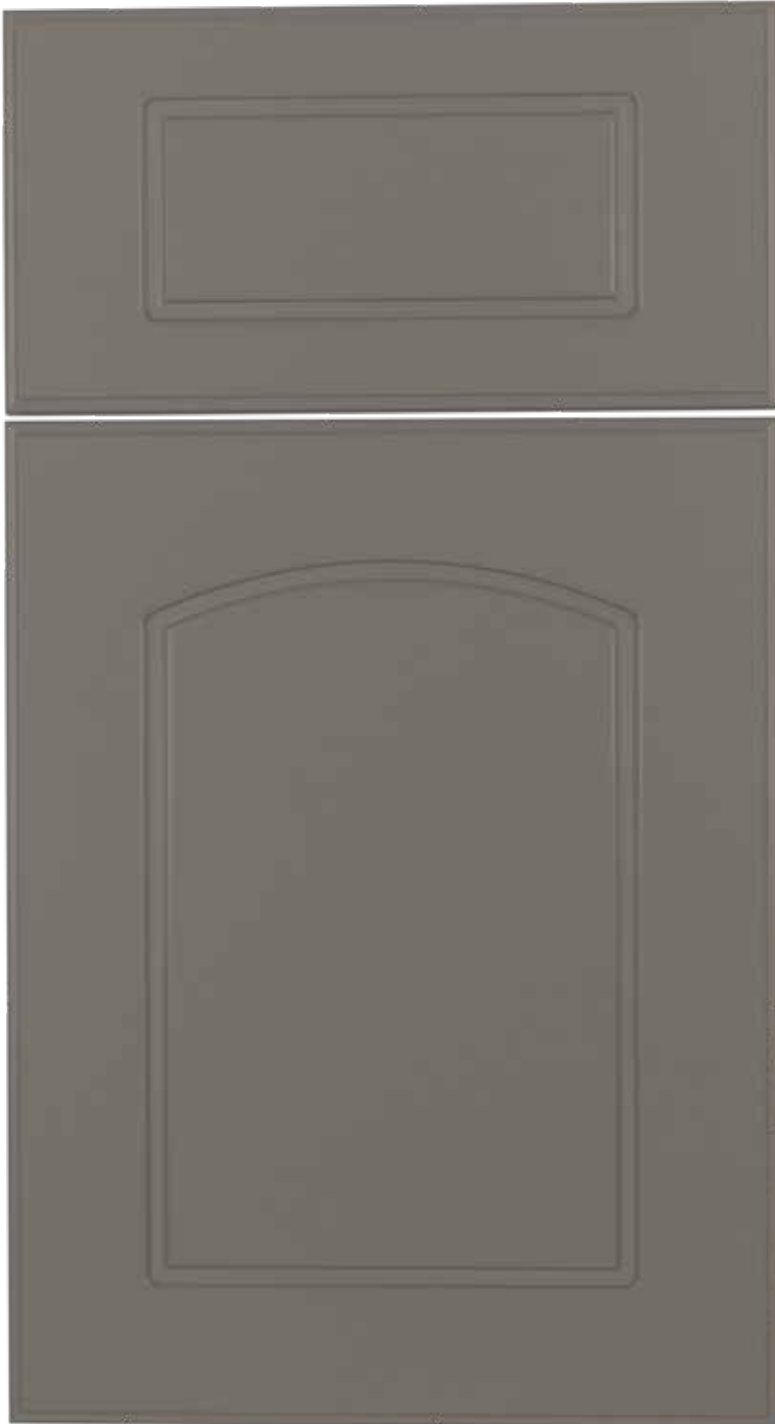


Inside Profile: Ogee Groove
Outside Profile: Radius
KDS602



Flagler

KING **DURASTYLE®** **Raised Panel** **DOOR STYLES**

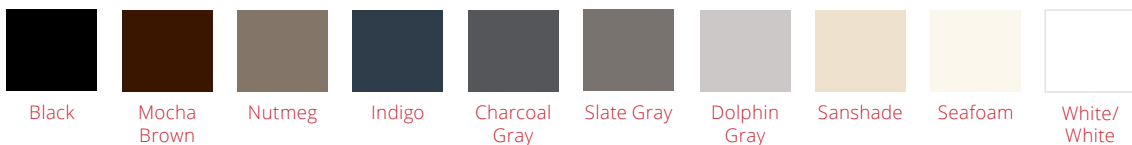


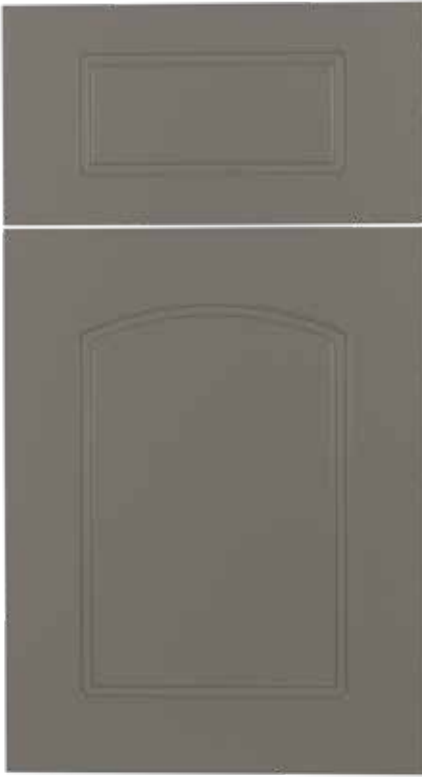
Inside Profile: Raised Ogee

Outside Profile: Ogee

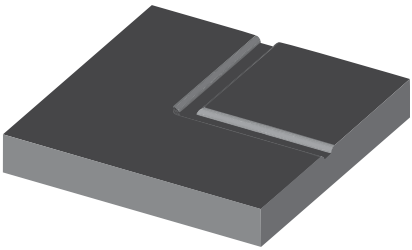
KDS604

Colors:

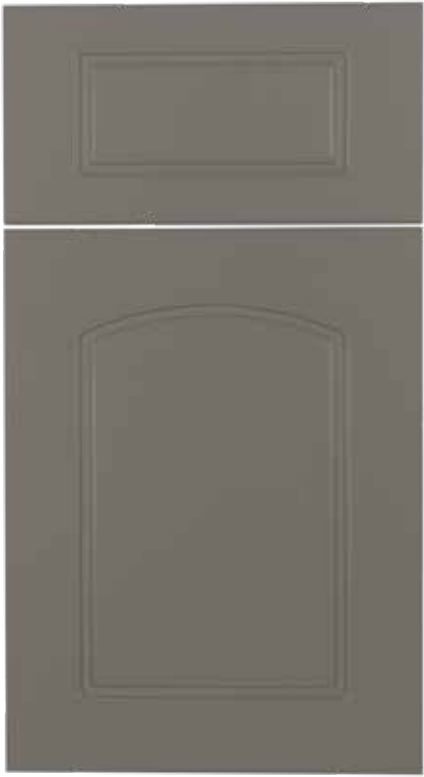
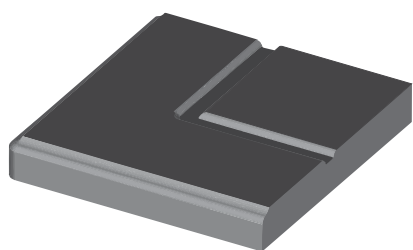




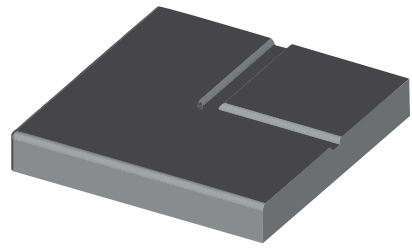
Inside Profile: Raised Ogee
Outside Profile: Flat
KDS603



Inside Profile: Raised Ogee
Outside Profile: Ogee
KDS604

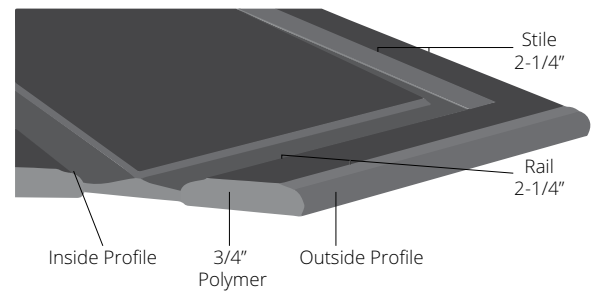


Inside Profile: Raised Ogee
Outside Profile: Radius
KDS605



Archer

KING **DURASTYLE®** **Raised Panel** **DOOR STYLES**

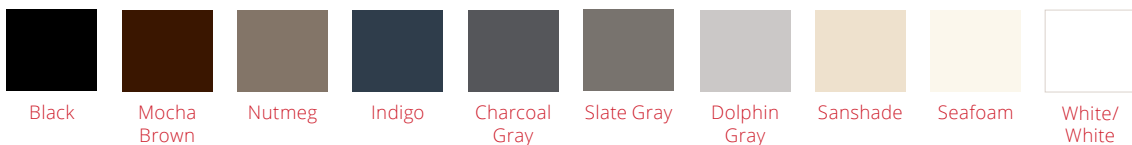


Inside Profile: Ogee Groove

Outside Profile: Ogee

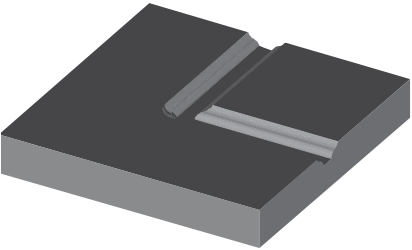
KDS701

Colors:

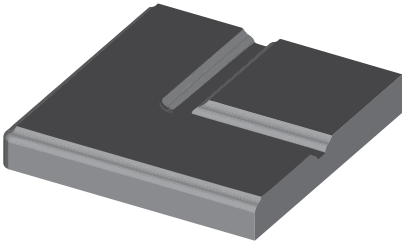




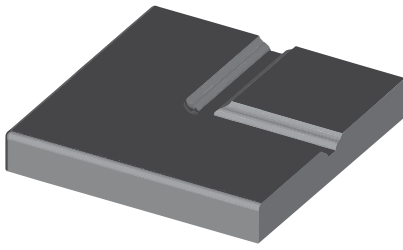
Inside Profile: Ogee Groove
Outside Profile: Flat
KDS700



Inside Profile: Ogee Groove
Outside Profile: Ogee
KDS701

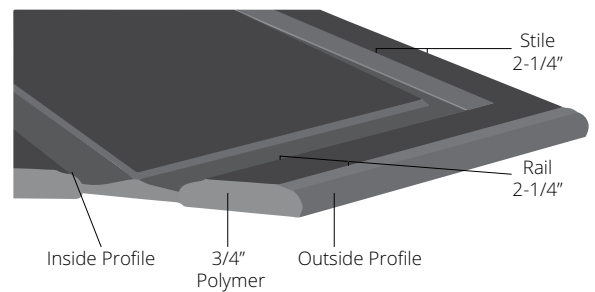


Inside Profile: Ogee Groove
Outside Profile: Radius
KDS702



Archer

KING **DURASTYLE®** **Raised Panel** **DOOR STYLES**

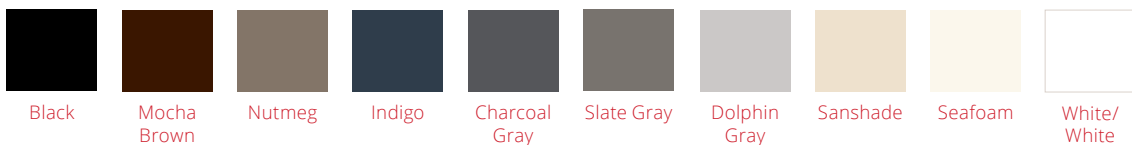


Inside Profile: Raised Ogee

Outside Profile: Ogee

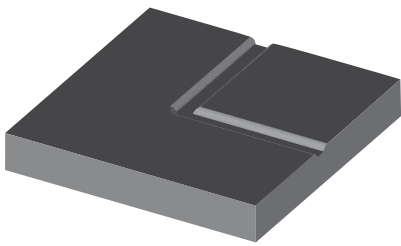
KDS704

Colors:

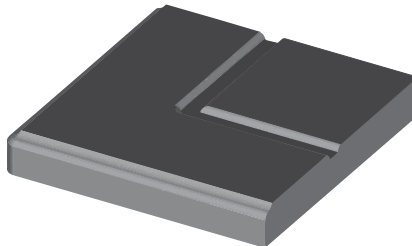




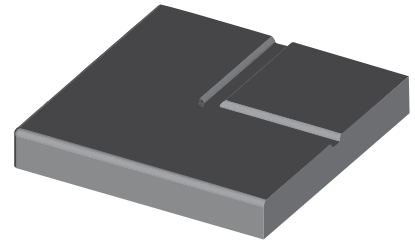
Inside Profile: Raised Ogee
Outside Profile: Flat
KDS703



Inside Profile: Raised Ogee
Outside Profile: Ogee
KDS704



Inside Profile: Raised Ogee
Outside Profile: Radius
KDS705



BEADBOARD AND SLAB DOOR STYLES



BEADBOARD AND SLAB DOOR STYLE

The **Beadboard** style creates a cottage charm feel while the **Slab** style creates a simple foundation for a classic look.

King DuraStyle® Custom Cabinet Door Program combines King StarBoard® ST, the super tough polymer sheet, with designer styles and state-of-art CNC fabrication. The high-density polyethylene will not rust, delaminate or rot. King DuraStyle® doors work as well inside as they do in outdoor areas where there may be water, high humidity and moisture. They will never need painting or re-finishing.

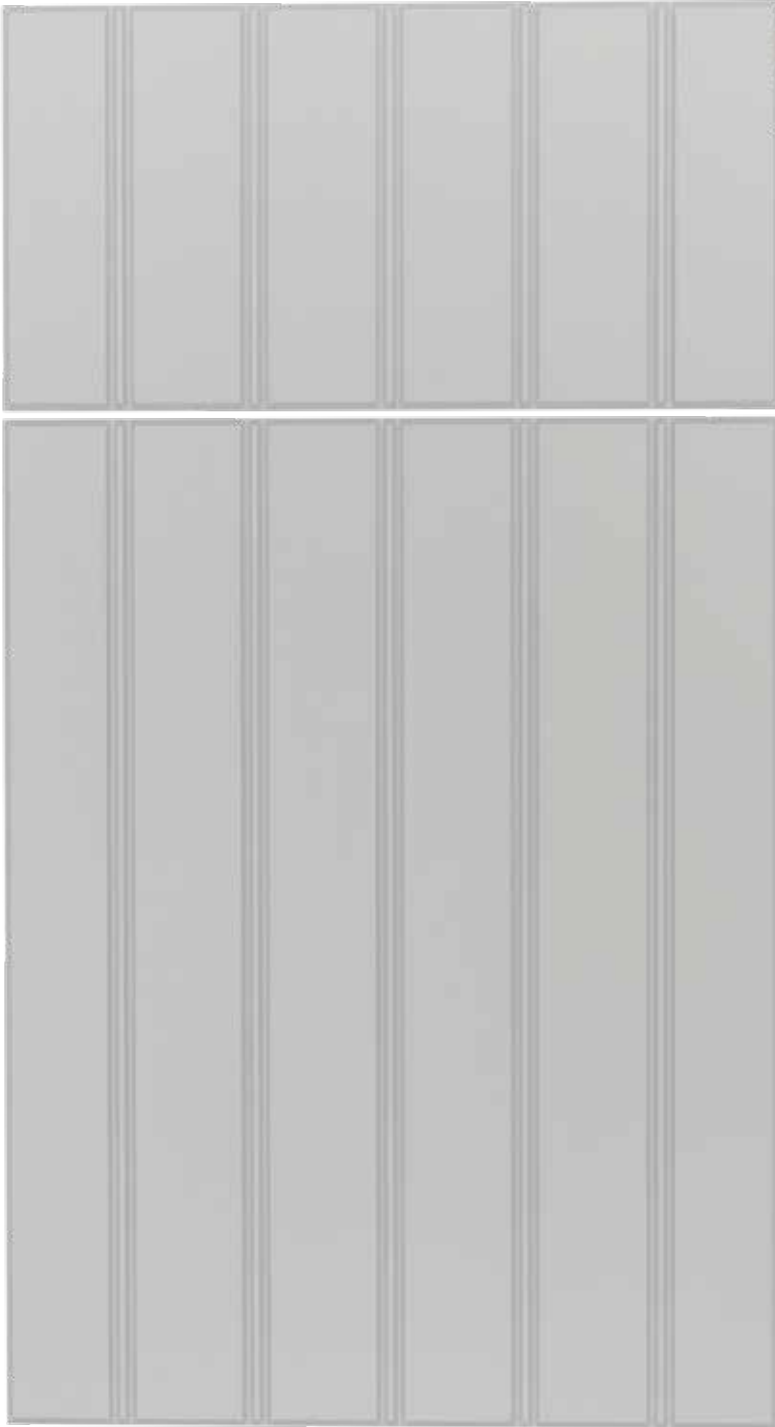
The doors come in several styles and ten standard colors. Custom styles, sizes and colors are available upon request.

Florida Groove

KING
DURASTYLE®

Beadboard

DOOR STYLES



Vertical Profile: V Groove

Outside Profile: Bevel

KDS800

Colors:



Black



Mocha
Brown



Nutmeg



Indigo



Charcoal
Gray



Slate Gray



Dolphin
Gray



Sanshade



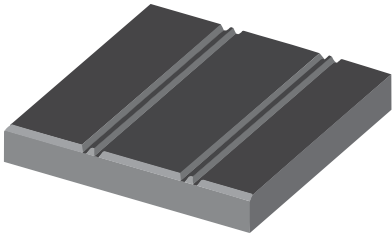
Seafoam



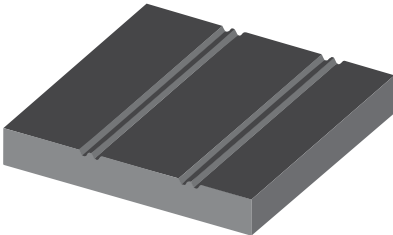
White/
White



Vertical Profile: V Groove
Outside Profile: Bevel
KDS800



Vertical Profile: V Groove
Outside Profile: Flat
KDS801



Atlantic

KING
DURASTYLE®

Beadboard

DOOR STYLES



Vertical Profile: Square Groove

Outside Profile: Bevel

KDS802

Colors:



Black



Mocha
Brown



Nutmeg



Indigo



Charcoal
Gray



Slate Gray



Dolphin
Gray



Sanshade



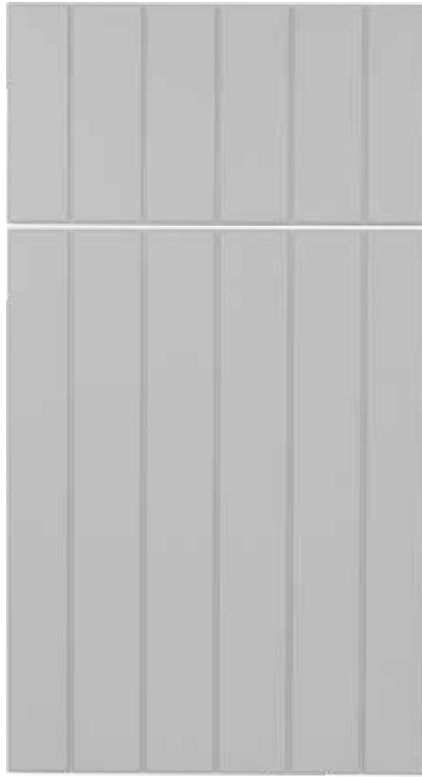
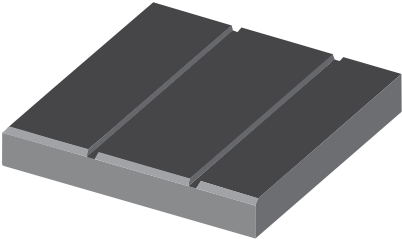
Seafoam



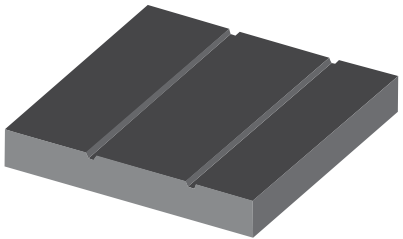
White/
White



Vertical Profile: Square Groove
Outside Profile: Bevel
KDS802



Vertical Profile: Square Groove
Outside Profile: Flat
KDS803

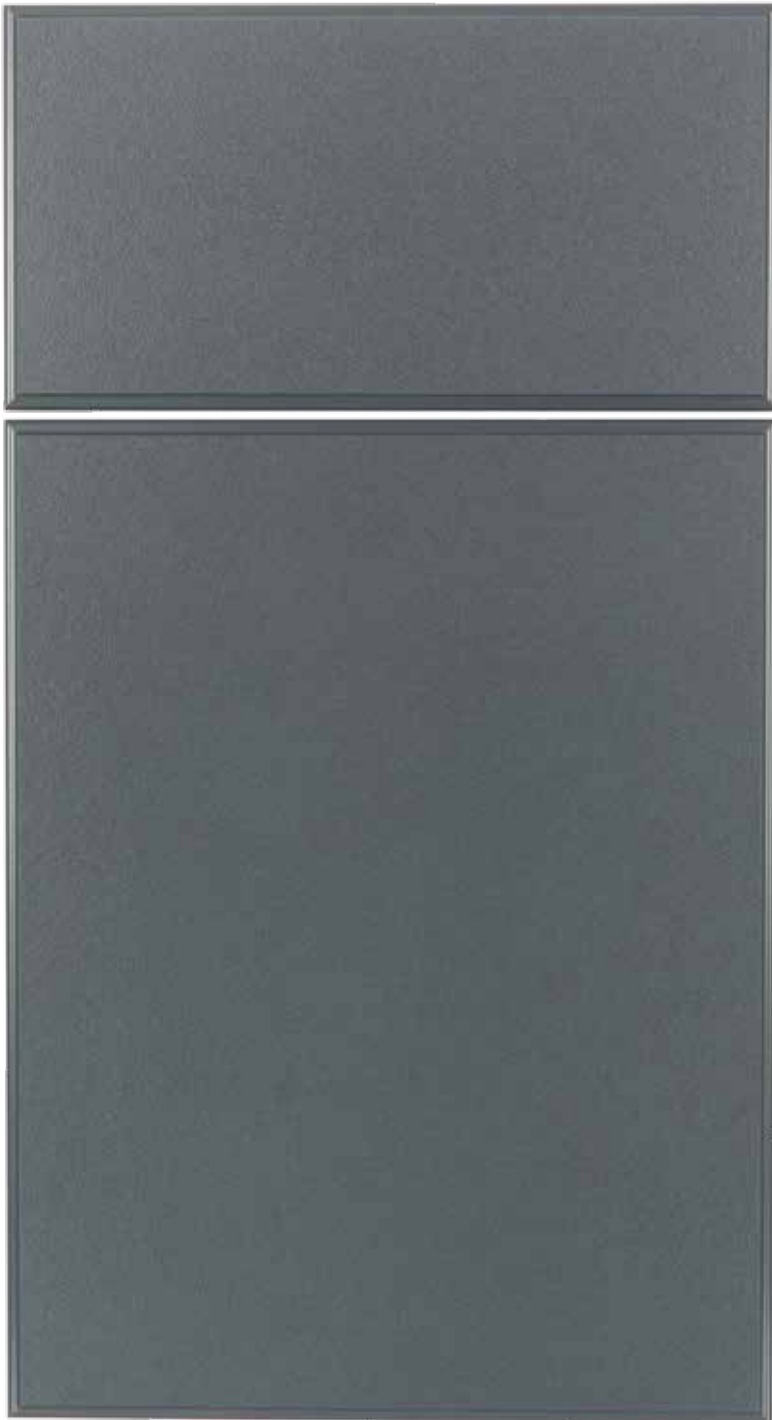


Urban

KING
DURASTYLE®

Slab

DOOR STYLES



Outside Profile: Ogee
KDS901

Colors:



Black



Mocha
Brown



Nutmeg



Indigo



Charcoal
Gray



Slate Gray



Dolphin
Gray



Sanshade



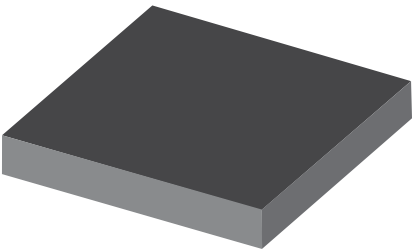
Seafoam



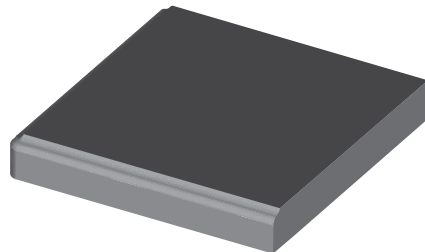
White/
White



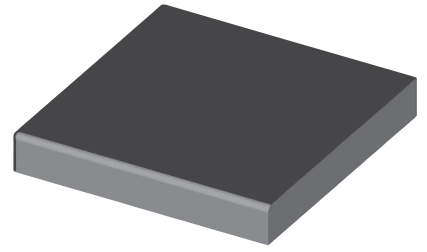
Outside Profile: Flat
KDS900



Outside Profile: Ogee
KDS901



Outside Profile: Radius
KDS902





Outdoor Durability with Indoor Style

King DuraStyle® Custom Cabinet Door Program combines King StarBoard® ST, the original environmentally stabilized polymer building sheet with designer styles, and state-of-the-art CNC fabrication. King DuraStyle® doors have a matte gloss finish. It is environmentally stabilized to withstand the harshest outdoor conditions. The doors will not rust, delaminate or rot when exposed to UV, humidity or water. King DuraStyle® never needs painting or refinishing.

The doors come in 46 styles and 10 standard colors. Custom styles, sizes and colors are available upon request.



Lead Times

Standard	Ships in 10 business days	No upcharge
Rush	Ships in 7 business days	50% upcharge
Expedite	Ships in 3 business days	75% upcharge

Custom Engraving

Personalize the look and style of your cabinet doors and drawers with your custom design.



Roman

Inside Profile: Flat
Outside Profile: Ogee

Note: Color accuracy can vary considerably on computer monitors and printers. Please consult your distributor for a product sample before making critical color choices.

PROFILE OPTIONS

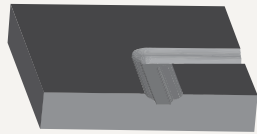
Inside Profiles



Square Groove



V Groove



Ogee Groove



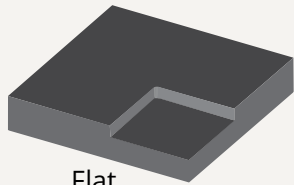
Raised Ogee



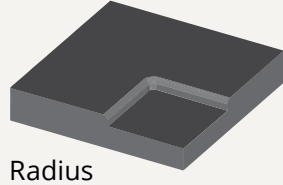
Flute



Large Flute

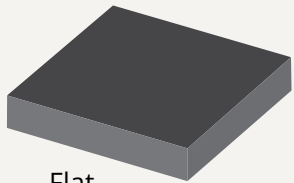


Flat

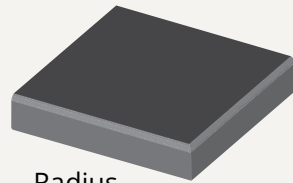


Radius

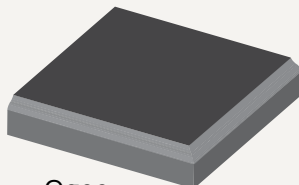
Outside Profiles



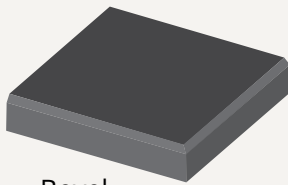
Flat



Radius



Ogee



Bevel

All Doors: Stiles and Rails 2-1/4"
 All Drawers: Rails 1-1/2"
 unless ordered as a "door"





King Plastic Corporation
Our Innovation. Your Imagination.®

1100 N. Toledo Blade Blvd. | North Port, FL 34288 USA
P: 941.493.5502 | F: 941.497.3274 | www.kingplastic.com

