



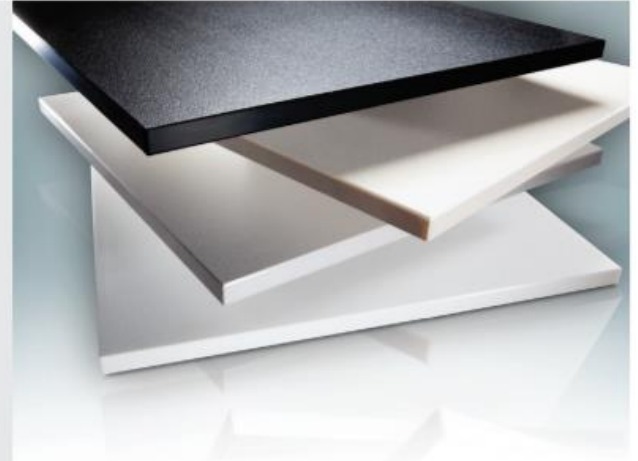
PROFESSIONAL PLASTICS

Simona® HDPE

High Density Polyethylene (HDPE)

Consistent flatness and stability in fabrication

| SIMONA® Product | Description | Typical Applications |
|---|---|---|
| HDPE | Standard high density PE | General consumer and industrial |
| PE 100 Pipe Grade | UV stabilized, black, high ductility | Fluid handling |
| Cutting Board | NSF 51 listed, FDA compliant | Food preparation and processing |
| Boat Board | UV stabilized; textured; solid colors | Marine; outdoor furniture and cabinetry |
| Polytone Playground & Sign Grade | UV stabilized; textured; solid and multi-layer colors | Playground structures and signs |
| SIMOLIFE HDPE, LDPE | Orthotics & Prosthetics grades | O&P products - |



STOCK PRODUCT RANGE

| | HDPE general industry products | | | | | HDPE sheet in industry-specific colors | | |
|--|--------------------------------|------------------------------|-------------------------------------|----------------------------------|--|---|---|---|
| | SIMONA® HDPE | SIMONA® PE 100 Pipe Grade | SIMONA® Cutting Board NSF 51 Listed | Utility Grade Special Order Only | SIMONA® Boat Board UV stabilized; textured | SIMONA® Polytone Playground & Sign Grade UV stabilized; textured | | |
| Colors | natural | black | black | natural | black | Colors and color combinations | | |
| | | | | | | Solid Colors <ul style="list-style-type: none"> polar white bright white dolphin gray glacier gray seafoam sandshade brown black | Solid Colors <ul style="list-style-type: none"> red yellow play blue forest green tan | Multi-layer Colors <ul style="list-style-type: none"> tan/red/tan black/white/black red/white/red green/white/green green/tan/green play blue/yellow/play blue play blue/white/play blue yellow/red/yellow red/yellow/red |
| Extruded Sheet (size / thickness) | | | | | | | | |
| 48 x 96" | 1/8 - 1-1/2" | 1/8 - 1" | 1/2 - 2" | 1/2; 3/4; 1" | 1/4 - 1" | | | 1/2" |
| 48 x 120" | 1/4 - 1" | | | 1/2; 3/4; 1" | | | 1/2; 3/4" | 3/4" |
| 60 x 120" | 1/4 - 1-1/2" | | 1/2 - 2" | 1/2; 3/4; 1" | | | | |
| 54 x 96" | | | | | | 1/4 - 1" | | |
| Welding Rod | | | | | | | | |
| Diameter - inches | | | 0.157" | | | | | |
| Solid Rod (length / diameter) | | | | | | | | |
| 96" | 3/8 - 2" | | | | | | | |
| 72" | 2-1/4 - 5" | | | | | | | |
| 48" | 6 - 14" | | | | | | | |
| 2000 mm (78") | | 10 mm - 120 mm (0.39 - 4.7") | | | | | | |

Other sizes & thicknesses: All products available in other sizes, thicknesses and colors made to order with minimums.

Sheet widths: 1/2" thickness up to 96" wide; 3/4" up to 92" wide; 1.5" up to 60" wide. Rod diameter of 31" (1000 mm) available on request.

Textures: Non-skid, diamond pattern available. Additives: Anti-microbial and rubber additives available.

www.professionalplastics.com

sales@proplas.com

USA (888) 995-7767 – Singapore +65 6266-6193 – 台灣 Taiwan +886 (3) 5357850