

Application Case Story

Meldin® 7000 Series

APPLICATION:

Packaging Equipment

MATERIAL:

Meldin® 7001

PART DEFINITION:

Seal

TECHNICAL DATA:

TYPICAL DIMENSIONS:

.5" ID X 1.06" OD X .25"
(12.7mm x 26.9mm x 6.35mm)

Counterface: High Watt Density
Heating Element

LUBRICATION OR MEDIA:

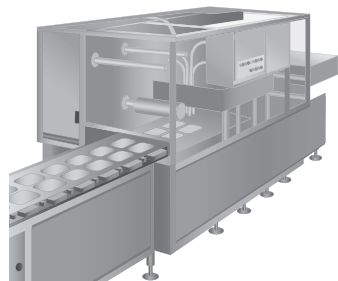
Direct Air Contact

WORKING TEMPERATURE:

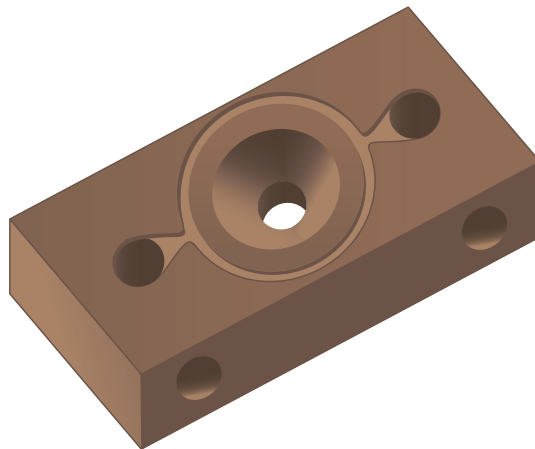
300°F (149°C) Maximum

FEATURES / BENEFITS:

This heating element seal undergoes repeated high temperature cycling, and **Meldin® 7001** has demonstrated good thermal resistance and dimensional stability under these conditions. The **Meldin® 7001** material shows superior thermal insulative performance than other polymer materials, especially at high applications temperatures. And the **Meldin® 7001** component offers a distinctive cost advantage over a ceramic component, while still providing the necessary high temperature capabilities.



HEAT SEALING MACHINE



MELDIN® 7001
HEATING ELEMENT SEAL



Saint-Gobain Performance Plastics

North America: 1-800-223-4966 Bristol, RI, USA

Europe: +32 3 458 28 28 Kontich, Belgium

Asia: +81 33 26 30 285 Tokyo, Japan

Email: sgppl.marketing@saint-gobain.com

Website: www.rulon-meldin.com

ACS-470-PDF-0607-SGCS

Meldin® is a registered trademark.
©2007 Saint-Gobain Performance Plastics